

American Academy of Religion

Survey of Undergraduate Religion and Theology Programs Data Analysis: Initial Data Run Packet Methodology

Copyright 1999 – 2003 American Academy of Religion

We suggest that you familiarize yourself with the *Survey of Undergraduate Religion and Theology Programs Questionnaire* (available at <http://www.aarweb.org/department/census.pdf>) prior to reviewing this document.

Analysis of the *Survey of Undergraduate Religion and Theology Programs Data* conforms to the following format:

Research Question: The AAR posed approximately 45 questions to guide the initial data analysis. Relevant questions are included prior to each table, and the full set of questions is included in Appendix A. Often one table or statistical procedure would not answer the question posed.

Table Heading: The headings for the tables are indexed to the research questions and also refer to the relevant Survey questions. The heading also gives some indication of the type of table or output represented. Thus, in a table with the heading **5.02: A1*D2:**

- 5.xx – indicates that this table is answering research question #5: “What is the relationship between institutional affiliation and faculty profiles [cross tabulate A1 with D1-D13]?”
- x.02 – indicates that this table represents the second table in the series of tables related to research question #5.
- A1 – indicates the Survey question A1:
A1. Which of the following descriptions best characterizes your institution?
(Mark (X) only one.)
1 __ Public
2 __ Private, non-sectarian
3 __ Catholic
4 __ Jewish
5 __ Protestant
6 __ Other religion
- * - indicates a cross tabulation. Most research questions ask for cross tabulations, but in some cases other types of data analysis are utilized and indicated.
- D2 – indicates the Survey question D2 (note that D2 is the female counterpart to D1):
D1-D2. In the 1999-2000 academic year, how many positions (i.e. salary lines) did your department or program support?

Full-time positions –	Male (D1)	Female (D2)
Tenured positions	a. _____	a. _____
Tenure track positions	b. _____	b. _____
Long-term contract positions	c. _____	c. _____
Terminal contract positions	d. _____	d. _____

Joint appointments e. _____ e. _____
Part-time positions (Include lecturers, adjuncts, etc. Do not include your institution's graduate students or any persons counted on lines a to e.) f. _____ f. _____

Survey Questions: For easy reference to the Survey question being addressed in the table, the text of all Survey questions has been included following each table.

What is the relationship between institutional affiliation [A1 1 through 6] and the description of the department or program [A3 – A8]?

1.01: A1 * A3 - Institution Type * Program type Crosstabulation

			Program type					Total
			Free-standing department	Combined department	Program that borrows faculty	Humanities or social science department	Research center	
Institution Type	Public	Count	77	81	35	28	1	222
		% of Total	8.7%	9.2%	4.0%	3.2%	.1%	25.1%
	Private, non-sectarian	Count	100	49	16	14		179
		% of Total	11.3%	5.5%	1.8%	1.6%		20.2%
	Catholic	Count	97	36	3	14		150
		% of Total	11.0%	4.1%	.3%	1.6%		16.9%
	Jewish	Count	2		1			3
		% of Total	.2%		.1%			.3%
	Protestant	Count	166	117	15	22		320
		% of Total	18.8%	13.2%	1.7%	2.5%		36.2%
	Other religion	Count	5	1	3	2		11
		% of Total	.6%	.1%	.3%	.2%		1.2%
Total		Count	447	284	73	80	1	885
		% of Total	50.5%	32.1%	8.2%	9.0%	.1%	100.0%

A1. Which of the following descriptions best characterizes your institution?

(Mark (X) only one.)

- 1 Public
- 2 Private, non-sectarian
- 3 Catholic
- 4 Jewish
- 5 Protestant
- 6 Other religion

A3. Which of the following descriptions best characterizes your department or program?

(Mark (X) only one.)

- 1 Free-standing department (e.g. "Department of Religious Studies")
- 2 Combined department (e.g. "Department of Religion and Philosophy")
- 3 Program that "borrows" faculty from a number of departments
- 4 Humanities or social science department or division
- 5 Research center

What is the relationship between institutional affiliation [A1 1 through 6] and the description of the department or program [A3 – A8]?

1.02: A1 * A4

			Institution				Total
			Institution - requires students take religion to graduate	Institution - offers religion degrees w/other institution	Institution - offers distance learning for religion courses	Institution - has tenure system for FT faculty	
Institution Type	Public	Count	9	15	72	210	213
		Row %	4.2	7.0	33.8	98.6	100.0
	Private, non-sectarian	Count	51	13	24	162	176
		Row %	29.0	7.4	13.6	92.0	100.0
	Catholic	Count	140	18	41	139	153
		Row %	91.5	11.8	26.8	90.8	100.0
	Jewish	Count	3	1	1	2	3
		Row %	100.0	33.3	33.3	66.7	100.0
	Protestant	Count	281	27	83	239	322
		Row %	87.3	8.4	25.8	74.2	100.0
	Other religion	Count	12		3	9	12
		Row %	100.0		25.0	75.0	100.0
Total	Count		496	74	224	761	879
		Row %	56.4	8.4	25.5	86.6	100.0

A1. Which of the following descriptions best characterizes your institution?

(Mark (X) only one.)

- 1 Public
- 2 Private, non-sectarian
- 3 Catholic
- 4 Jewish
- 5 Protestant
- 6 Other religion

A4. Does your institution. . .

Yes No

- 1 2 **a.** Require that students take courses in religion in order to graduate?
- 1 2 **b.** Offer religion degrees in partnership with another institution?
- 1 2 **c.** Offer distance learning for religion courses?
- 1 2 **d.** Have a tenure system for full-time faculty?

What is the relationship between institutional affiliation [A1 1 through 6] and the description of the department or program [A3 – A8]?

1.03: A1 * A5

			Is study of religion a central focus of your program?		Total
			Yes	No	
Institution Type	Public	Count	175	47	222
		% within Institution Type	78.8%	21.2%	100.0%
	Private, non-sectarian	Count	156	27	183
		% within Institution Type	85.2%	14.8%	100.0%
	Catholic	Count	147	6	153
		% within Institution Type	96.1%	3.9%	100.0%
	Jewish	Count	3		3
		% within Institution Type	100.0%		100.0%
	Protestant	Count	314	9	323
		% within Institution Type	97.2%	2.8%	100.0%
	Other religion	Count	9	3	12
		% within Institution Type	75.0%	25.0%	100.0%
Total		Count	804	92	896
		% within Institution Type	89.7%	10.3%	100.0%

A1. Which of the following descriptions best characterizes your institution?

(Mark (X) only one.)

- 1 Public
- 2 Private, non-sectarian
- 3 Catholic
- 4 Jewish
- 5 Protestant
- 6 Other religion

A5. Is the study of religion a central focus of your department or program?

- 1 Yes
- 2 No

What is the relationship between institutional affiliation [A1 1 through 6] and the description of the department or program [A3 – A8]?

1.04: A1 * A6

			Program offers major		Total
			Yes	No	
Institution Type	Public	Count	165	57	222
		% within Institution Type	74.3%	25.7%	100.0%
	Private, non-sectarian	Count	163	20	183
		% within Institution Type	89.1%	10.9%	100.0%
	Catholic	Count	138	15	153
		% within Institution Type	90.2%	9.8%	100.0%
	Jewish	Count	2	1	3
		% within Institution Type	66.7%	33.3%	100.0%
	Protestant	Count	304	20	324
		% within Institution Type	93.8%	6.2%	100.0%
	Other religion	Count	10	2	12
		% within Institution Type	83.3%	16.7%	100.0%
Total		Count	782	115	897
		% within Institution Type	87.2%	12.8%	100.0%

A1. Which of the following descriptions best characterizes your institution?

(Mark (X) only one.)

- 1 Public
- 2 Private, non-sectarian
- 3 Catholic
- 4 Jewish
- 5 Protestant
- 6 Other religion

A6. Does your department or program offer an undergraduate major in religion?

- 1 Yes
- 2 No

What is the relationship between institutional affiliation [A1 1 through 6] and the description of the department or program [A3 – A8]?

1.05: A1*A7

			Program offers minor		Total
			Yes	No	
Institution Type	Public	Count	173	48	221
		% within Institution Type	78.3%	21.7%	100.0%
	Private, non-sectarian	Count	157	25	182
		% within Institution Type	86.3%	13.7%	100.0%
	Catholic	Count	141	11	152
		% within Institution Type	92.8%	7.2%	100.0%
	Jewish	Count	1	2	3
		% within Institution Type	33.3%	66.7%	100.0%
	Protestant	Count	263	57	320
		% within Institution Type	82.2%	17.8%	100.0%
	Other religion	Count	5	7	12
		% within Institution Type	41.7%	58.3%	100.0%
Total		Count	740	150	890
		% within Institution Type	83.1%	16.9%	100.0%

A1. Which of the following descriptions best characterizes your institution?

(Mark (X) only one.)

- 1 Public
- 2 Private, non-sectarian
- 3 Catholic
- 4 Jewish
- 5 Protestant
- 6 Other religion

A7. Does your department or program offer an undergraduate minor in religion?

- 1 Yes
- 2 No

What is the relationship between institutional affiliation [A1 1 through 6] and the description of the department or program [A3 – A8]?

1.06: A1 * A6

			Degrees offered						Total
			Certificate	AA	Bachelor	Master	Doctorate	Other	
Institution Type	Public	Count	12	31	173	48	21	22	222
		Row %	5.4	14.0	77.9	21.6	9.5	9.9	100.0
	Private, non-sectarian	Count	14	14	178	41	29	7	183
		Row %	7.7	7.7	97.3	22.4	15.8	3.8	100.0
	Catholic	Count	44	25	147	67	13	7	153
		Row %	28.8	16.3	96.1	43.8	8.5	4.6	100.0
	Jewish	Count			3	2	1		3
		Row %			100.0	66.7	33.3		100.0
	Protestant	Count	47	84	308	64	11	11	324
		Row %	14.5	25.9	95.1	19.8	3.4	3.4	100.0
	Other religion	Count	3	2	9	3		2	12
		Row %	25.0	16.7	75.0	25.0		16.7	100.0
Total	Count		120	156	818	225	75	49	897
	Row %		13.4	17.4	91.2	25.1	8.4	5.5	100.0

A1. Which of the following descriptions best characterizes your institution?

(Mark (X) only one.)

- 1 Public
- 2 Private, non-sectarian
- 3 Catholic
- 4 Jewish
- 5 Protestant
- 6 Other religion

A6. Does your department or program offer an undergraduate major in religion?

- 1 Yes
- 2 No

Rank the number of undergraduate religion majors [A6.1] by institutional affiliation [A1 1 through 6]

2.00: A1 * A6 RANK

Institutions with majors

	Count	%
Protestant	304	38.9%
Public	165	21.1%
Private, non-sectarian	163	20.8%
Catholic	138	17.6%
Other religion	10	1.3%
Jewish	2	0.3%
TOTAL	782	100%

A1. Which of the following descriptions best characterizes your institution?

(Mark (X) only one.)

- 1 Public
- 2 Private, non-sectarian
- 3 Catholic
- 4 Jewish
- 5 Protestant
- 6 Other religion

A6. Does your department or program offer an undergraduate major in religion?

- 1 Yes
- 2 No

Rank the number of undergraduate religion minors [A7.1] by institutional affiliation [A1 1 through 6]

3.00: A1 *A7 RANK

Institutions with minors

	Count	%
Protestant	263	35.5%
Public	173	23.4%
Private, non-sectarian	157	21.2%
Catholic	141	19.1%
Other religion	5	0.7%
Jewish	1	0.1%
TOTAL	740	100%

A1. Which of the following descriptions best characterizes your institution?

(Mark (X) only one.)

- 1 Public
- 2 Private, non-sectarian
- 3 Catholic
- 4 Jewish
- 5 Protestant
- 6 Other religion

A7. Does your department or program offer an undergraduate minor in religion?

- 1 Yes
- 2 No

What courses [B1 a through dd] are the most likely to fulfill general education requirements? [B4a1 – dd1]? Rank all of the courses by **percentage**, beginning with the highest percentage first.

4.00: B1 RANK

	Yes
	%
Intro to Religion	80.5%
Intro to Bible	79.5%
Christian - Old Testament	76.9%
Christian - New Testament	75.6%
Intro to World Religions	74.0%
Ethics	73.7%
Christian - Ethics	70.7%
Judaism	69.1%
Intro to Western Religions	68.4%
Comparative	67.2%
Intro to Eastern Religions	67.0%
Christian - Theological	66.5%
Buddhism	66.5%
American Religion	66.4%
Christian - Historical	66.3%
Arts, Literature and Religion	65.1%
Women's Studies	64.7%
Christian - Cultural	63.5%
Gender & Sexuality	61.5%
Hinduism/Jainism/Sikhism	60.9%
Islam	60.1%
Philosophy of Religion	57.8%
Ritual and Performance	54.9%
Other	54.8%
Confucianism/Taoism	54.6%
Indigenous Religions	50.8%
Social Scientific Study	48.8%
Racial and Ethnic Studies	48.6%
Intro to Sacred Texts	47.7%
NRMs	41.1%

B4. Do any of these courses fulfill a general education or distribution requirement at your institution?

What is the relationship between institutional affiliation and faculty profiles [cross tabulate A1 with D1-D13]?

5.01: A1 * D1	Institution Type	Public	Private, non-sectarian	Catholic	Jewish	Protestant	Other religion	TOTALS
Male Tenured	Sum	664	406	578	3	699	41	2391
	Row Sum %	27.8%	17.0%	24.2%	0.1%	29.2%	1.7%	100%
	Col Sum %	43.5%	39.5%	38.2%	13.6%	28.0%	36.0%	
	Table Sum %	9.9%	6.1%	8.6%	0.0%	10.4%	0.6%	35.7%
Male tenure track	Sum	154	140	170	1	304	12	781
	Row Sum %	19.7%	17.9%	21.8%	0.1%	38.9%	1.5%	100%
	Col Sum %	10.1%	13.6%	11.2%	4.5%	12.2%	10.5%	
	Table Sum %	2.3%	2.1%	2.5%	0.0%	4.5%	0.2%	11.7%
Male long-term contract	Sum	64	72	65	8	369	3	581
	Row Sum %	11.0%	12.4%	11.2%	1.4%	63.5%	0.5%	100%
	Col Sum %	4.2%	7.0%	4.3%	36.4%	14.8%	2.6%	
	Table Sum %	1.0%	1.1%	1.0%	0.1%	5.5%	0.0%	8.7%
Male terminal contract	Sum	72	44	37	5	119	2	279
	Row Sum %	25.8%	15.8%	13.3%	1.8%	42.7%	0.7%	100%
	Col Sum %	4.7%	4.3%	2.4%	22.7%	4.8%	1.8%	
	Table Sum %	1.1%	0.7%	0.6%	0.1%	1.8%	0.0%	4.2%
Male joint appts	Sum	51	49	33	1	70	14	218
	Row Sum %	23.4%	22.5%	15.1%	0.5%	32.1%	6.4%	100%
	Col Sum %	3.3%	4.8%	2.2%	4.5%	2.8%	12.3%	
	Table Sum %	0.8%	0.7%	0.5%	0.0%	1.0%	0.2%	3.3%
Male PT Positions 99-00	Sum	521	316	629	4	931	42	2443
	Row Sum %	21.3%	12.9%	25.7%	0.2%	38.1%	1.7%	100%
	Col Sum %	34.1%	30.8%	41.6%	18.2%	37.4%	36.8%	
	Table Sum %	7.8%	4.7%	9.4%	0.1%	13.9%	0.6%	36.5%
Totals	Sum Total	1526	1027	1512	22	2492	114	6693
	Col Sum Total	100%	100%	100%	100%	100%	100%	
	Table Sum Total	22.8%	15.3%	22.6%	0.3%	37.2%	1.7%	100.0%

A1. Which of the following descriptions best characterizes your institution?

(Mark (X) only one.)

- 1 Public
- 2 Private, non-sectarian
- 3 Catholic
- 4 Jewish
- 5 Protestant
- 6 Other religion

D1-D2. In the 1999-2000 academic year, how many positions (i.e. salary lines) did your department or program support?

Full-time positions –

Male (D1) Female (D2)

Tenured positions

a. _____ a. _____

Tenure track positions

b. _____ b. _____

Long-term contract positions

c. _____ c. _____

Terminal contract positions

d. _____ d. _____

Joint appointments

e. _____ e. _____

Part-time positions (Include lecturers, adjuncts, etc. Do not include your institution's graduate students or any persons counted on lines a to e.)

f. _____ f. _____

What is the relationship between institutional affiliation and faculty profiles [cross tabulate A1 with D1-D13]?

5.02: A1 * D2	Institution Type	Public	Private, non-sectarian	Catholic	Jewish	Protestant	Other religion	TOTALS
Female tenured	Sum	155	131	184	2	78	7	557
	Row Sum %	27.8%	23.5%	33.0%	0.4%	14.0%	1.3%	100.0%
	Col Sum %	27.3%	29.6%	25.5%	13.3%	14.1%	33.3%	
	Table Sum %	6.7%	5.6%	7.9%	0.1%	3.4%	0.3%	24.0%
Female tenure track	Sum	99	77	97	2	85	1	361
	Row Sum %	27.4%	21.3%	26.9%	0.6%	23.5%	0.3%	100.0%
	Col Sum %	17.5%	17.4%	13.5%	13.3%	15.3%	4.8%	
	Table Sum %	4.3%	3.3%	4.2%	0.1%	3.7%	0.0%	15.6%
Female long-term contract	Sum	27	45	33	8	68	0	181
	Row Sum %	14.9%	24.9%	18.2%	4.4%	37.6%	0.0%	100.0%
	Col Sum %	4.8%	10.2%	4.6%	53.3%	12.3%	0.0%	
	Table Sum %	1.2%	1.9%	1.4%	0.3%	2.9%	0.0%	7.8%
Female terminal contract	Sum	19	34	28	2	31	0	114
	Row Sum %	16.7%	29.8%	24.6%	1.8%	27.2%	0.0%	100.0%
	Col Sum %	3.4%	7.7%	3.9%	13.3%	5.6%	0.0%	
	Table Sum %	0.8%	1.5%	1.2%	0.1%	1.3%	0.0%	4.9%
Female joint appts	Sum	27	15	8	0	5	1	56
	Row Sum %	48.2%	26.8%	14.3%	0.0%	8.9%	1.8%	100.0%
	Col Sum %	4.8%	3.4%	1.1%	0.0%	0.9%	4.8%	
	Table Sum %	1.2%	0.6%	0.3%	0.0%	0.2%	0.0%	2.4%
Female PT positions	Sum	240	140	371	1	287	12	1051
	Row Sum %	22.8%	13.3%	35.3%	0.1%	27.3%	1.1%	100.0%
	Col Sum %	42.3%	31.7%	51.5%	6.7%	51.8%	57.1%	
	Table Sum %	10.3%	6.0%	16.0%	0.0%	12.4%	0.5%	45.3%
Totals	Sum Total	567	442	721	15	554	21	2320
	Col Sum Total	100.0%	100.0%	100.0%	100.0%	100.0%	100.0%	
	Table Sum Total	24.4%	19.1%	31.1%	0.6%	23.9%	0.9%	100.0%

A1. Which of the following descriptions best characterizes your institution?

(Mark (X) only one.)

- 1 Public
- 2 Private, non-sectarian
- 3 Catholic
- 4 Jewish
- 5 Protestant
- 6 Other religion

D1-D2. In the 1999-2000 academic year, how many positions (i.e. salary lines) did your department or program support?

Full-time positions –	Male (D1)	Female (D2)
Tenured positions	a. _____	a. _____
Tenure track positions	b. _____	b. _____
Long-term contract positions	c. _____	c. _____
Terminal contract positions	d. _____	d. _____

Joint appointments e. _____ e. _____

Part-time positions (Include lecturers, adjuncts, etc. Do not include your institution's graduate students or any persons counted on lines a to e.)

f. _____ f. _____

What is the relationship between institutional affiliation and faculty profiles [cross tabulate A1 with D1-D13]?

	Institution Type	Public	Private, non-sectarian	Catholic	Jewish	Protestant	Other religion	Totals
5.03 & 5.04: A1 * d3,d4								
Fac w/ Doc 99-00	Sum	1473	973	1172	22	1504	47	5191
	Row Sum %	28.4%	18.7%	22.6%	0.4%	29.0%	0.9%	100.0%
	Col Sum %	72.6%	79.0%	91.8%	71.0%	89.0%	90.4%	
	Table Sum %	23.3%	15.4%	18.6%	0.3%	23.8%	0.7%	82.3%
Fac w/ Doc in other fields 99-00	Sum	556	259	105	9	186	5	1120
	Row Sum %	49.6%	23.1%	9.4%	0.8%	16.6%	0.4%	100.0%
	Col Sum %	27.4%	21.0%	8.2%	29.0%	11.0%	9.6%	
	Table Sum %	8.8%	4.1%	1.7%	0.1%	2.9%	0.1%	17.7%
Totals	Sum Total	2029	1232	1277	31	1690	52	6311
	Col Sum Total	100.0%	100.0%	100.0%	100.0%	100.0%	100.0%	
	Table Sum Total							
	Total	32.2%	19.5%	20.2%	0.5%	26.8%	0.8%	100.0%

A1. Which of the following descriptions best characterizes your institution?

(Mark (X) only one.)

- 1 Public
- 2 Private, non-sectarian
- 3 Catholic
- 4 Jewish
- 5 Protestant
- 6 Other religion

D3. In the 1999-2000 academic year, how many faculty members in your department or program held doctorate degrees?

(Write in number. If none, enter "0".)

Number of faculty members in 1999-2000 holding doctorates

D4. In the 1999-2000 academic year, how many faculty members in your department or program held doctorates in fields other than religion, theology, Biblical studies or sacred texts?

(Write in number. If none, enter "0".)

Number of faculty members in 1999-2000 holding non-religion doctorates

What is the relationship between institutional affiliation and faculty profiles [cross tabulate A1 with D1-D13]?

5.05: A1 * D5	Institution Type	Public	Private, non-sectarian	Catholic	Jewish	Protestant	Other religion	Totals
Male FT Prof	Sum	466	313	303	6	701	40	1829
	Row Sum %	25.5%	17.1%	16.6%	0.3%	38.3%	2.2%	100.0%
	Col Sum %	44.8%	46.6%	30.9%	23.1%	44.7%	47.6%	
	Table Sum %	10.7%	7.2%	6.9%	0.1%	16.0%	0.9%	41.9%
Male FT Assc	Sum	271	153	252	3	363	20	1062
	Row Sum %	25.5%	14.4%	23.7%	0.3%	34.2%	1.9%	100.0%
	Col Sum %	26.0%	22.8%	25.7%	11.5%	23.2%	23.8%	
	Table Sum %	6.2%	3.5%	5.8%	0.1%	8.3%	0.5%	24.3%
Male FT Asst	Sum	151	127	199	7	331	10	825
	Row Sum %	18.3%	15.4%	24.1%	0.8%	40.1%	1.2%	100.0%
	Col Sum %	14.5%	18.9%	20.3%	26.9%	21.1%	11.9%	
	Table Sum %	3.5%	2.9%	4.6%	0.2%	7.6%	0.2%	18.9%
Male FT Inst/other	Sum	153	79	226	10	172	14	654
	Row Sum %	23.4%	12.1%	34.6%	1.5%	26.3%	2.1%	100.0%
	Col Sum %	14.7%	11.8%	23.1%	38.5%	11.0%	16.7%	
	Table Sum %	3.5%	1.8%	5.2%	0.2%	3.9%	0.3%	15.0%
Totals	Sum Total	1041	672	980	26	1567	84	4370
	Col Sum Total	100.0%	100.0%	100.0%	100.0%	100.0%	100.0%	
	Table Sum Total							
	Total	23.8%	15.4%	22.4%	0.6%	35.9%	1.9%	100.0%

A1. Which of the following descriptions best characterizes your institution?

(Mark (X) only one.)

- 1 Public
- 2 Private, non-sectarian
- 3 Catholic
- 4 Jewish
- 5 Protestant
- 6 Other religion

D5-D6. During the 1999-2000 academic year, how many full-time faculty members did your department or program have in each of the categories below? (Write in numbers. If none, enter "0".)

	Male(D5)	Female(D6)
Professor	a. _____	a. _____
Associate professor	b. _____	b. _____
Assistant professor	c. _____	c. _____
Instructor/Other	d. _____	d. _____

What is the relationship between institutional affiliation and faculty profiles [cross tabulate A1 with D1-D13]?

5.06: A1 * D6	Institution Type	Public	Private, non-sectarian	Catholic	Jewish	Protestant	Other religion	Totals
Female FT Prof	Sum	93	64	64	4	28	2	255
	Row Sum %	36.5%	25.1%	25.1%	1.6%	11.0%	0.8%	100.0%
	Col Sum %	25.8%	23.5%	17.6%	20.0%	10.4%	14.3%	
	Table Sum %	7.2%	4.9%	4.9%	0.3%	2.2%	0.2%	19.6%
Female FT Assc	Sum	98	55	108	3	68	3	335
	Row Sum %	29.3%	16.4%	32.2%	0.9%	20.3%	0.9%	100.0%
	Col Sum %	27.1%	20.2%	29.8%	15.0%	25.4%	21.4%	
	Table Sum %	7.6%	4.2%	8.3%	0.2%	5.2%	0.2%	25.8%
Female FT Asst	Sum	96	92	119	4	106	1	418
	Row Sum %	23.0%	22.0%	28.5%	1.0%	25.4%	0.2%	100.0%
	Col Sum %	26.6%	33.8%	32.8%	20.0%	39.6%	7.1%	
	Table Sum %	7.4%	7.1%	9.2%	0.3%	8.2%	0.1%	32.2%
Female FT Inst/Other	Sum	74	61	72	9	66	8	290
	Row Sum %	25.5%	21.0%	24.8%	3.1%	22.8%	2.8%	100.0%
	Col Sum %	20.5%	22.4%	19.8%	45.0%	24.6%	57.1%	
	Table Sum %	5.7%	4.7%	5.5%	0.7%	5.1%	0.6%	22.3%
Totals	Sum Total	361	272	363	20	268	14	1298
	Col Sum Total	100.0%	100.0%	100.0%	100.0%	100.0%	100.0%	
	Table Sum Total	27.8%	21.0%	28.0%	1.5%	20.6%	1.1%	100.0%

A1. Which of the following descriptions best characterizes your institution?

(Mark (X) only one.)

- 1 Public
- 2 Private, non-sectarian
- 3 Catholic
- 4 Jewish
- 5 Protestant
- 6 Other religion

D5-D6. During the 1999-2000 academic year, how many full-time faculty members did your department or program have in each of the categories below? (Write in numbers. If none, enter "0".)

	Male(D5)	Female(D6)
Professor	a. _____	a. _____
Associate professor	b. _____	b. _____
Assistant professor	c. _____	c. _____
Instructor/Other	d. _____	d. _____

What is the relationship between institutional affiliation and faculty profiles [cross tabulate A1 with D1-D13]?

5.07: A1 * D7

		Institution Type						Group Total
		Public	Private, non-sectarian	Catholic	Jewish	Protestant	Other religion	
99-00 Courses at	Sum	1369	607	1533	16	1695	83	5303
per-course rate	Row Sum %	25.8%	11.4%	28.9%	.3%	32.0%	1.6%	100.0%

A1. Which of the following descriptions best characterizes your institution?

(Mark (X) only one.)

- 1 Public
- 2 Private, non-sectarian
- 3 Catholic
- 4 Jewish
- 5 Protestant
- 6 Other religion

D7. In the 1999-2000 academic year, how many courses were taught by faculty members who were paid at a per-course rate? (Do not include courses taught by your institution's graduate students.)

_____ Write in Number

What is the relationship between institutional affiliation and faculty profiles [cross tabulate A1 with D1-D13]?

5.08: A1* D8	Institution Type	Public	Private, non-sectarian	Catholic	Jewish	Protestant	Other religion	Totals
Under \$1000	Sum	2	4	2	0	17	0	25
	Row Sum %	8.0%	16.0%	8.0%	0.0%	68.0%	0.0%	100.0%
	Col Sum %	1.1%	2.9%	1.6%	0.0%	6.4%	0.0%	
	Table Sum %	0.3%	0.6%	0.3%	0.0%	2.4%	0.0%	3.5%
Between \$1000 & \$1999	Sum	42	38	57	1	141	7	286
	Row Sum %	14.7%	13.3%	19.9%	0.3%	49.3%	2.4%	100.0%
	Col Sum %	23.6%	27.3%	44.5%	33.3%	53.2%	77.8%	
	Table Sum %	5.8%	5.3%	7.9%	0.1%	19.5%	1.0%	39.6%
Between \$2000 & \$2999	Sum	51	33	49	1	80	1	215
	Row Sum %	23.7%	15.3%	22.8%	0.5%	37.2%	0.5%	100.0%
	Col Sum %	28.7%	23.7%	38.3%	33.3%	30.2%	11.1%	
	Table Sum %	7.1%	4.6%	6.8%	0.1%	11.1%	0.1%	29.8%
Between \$3000 & \$3999	Sum	33	21	17	0	21	0	92
	Row Sum %	35.9%	22.8%	18.5%	0.0%	22.8%	0.0%	100.0%
	Col Sum %	18.5%	15.1%	13.3%	0.0%	7.9%	0.0%	
	Table Sum %	4.6%	2.9%	2.4%	0.0%	2.9%	0.0%	12.7%
Between \$4000 & \$4999	Sum	26	17	2	0	4	1	50
	Row Sum %	52.0%	34.0%	4.0%	0.0%	8.0%	2.0%	100.0%
	Col Sum %	14.6%	12.2%	1.6%	0.0%	1.5%	11.1%	
	Table Sum %	3.6%	2.4%	0.3%	0.0%	0.6%	0.1%	6.9%
Between \$5000 & \$5999	Sum	13	19	0	1	2	0	35
	Row Sum %	37.1%	54.3%	0.0%	2.9%	5.7%	0.0%	100.0%
	Col Sum %	7.3%	13.7%	0.0%	33.3%	0.8%	0.0%	
	Table Sum %	1.8%	2.6%	0.0%	0.1%	0.3%	0.0%	4.8%
Over \$6000	Sum	11	7	1	0	0	0	19
	Row Sum %	57.9%	36.8%	5.3%	0.0%	0.0%	0.0%	100.0%
	Col Sum %	6.2%	5.0%	0.8%	0.0%	0.0%	0.0%	
	Table Sum %	1.5%	1.0%	0.1%	0.0%	0.0%	0.0%	2.6%
Totals	Sum Total	178	139	128	3	265	9	722
	Col Sum Total	100.0%	100.0%	100.0%	100.0%	100.0%	100.0%	
	Table Sum Total							
	Total	24.7%	19.3%	17.7%	0.4%	36.7%	1.2%	100.0%

A1. Which of the following descriptions best characterizes your institution?

(Mark (X) only one.)

1 ___ Public

- 2 __ Private, non-sectarian
- 3 __ Catholic
- 4 __ Jewish
- 5 __ Protestant
- 6 __ Other religion

D8. What is the pay per course for part-time faculty?

\$_____ Write in Amount

What is the relationship between institutional affiliation and faculty profiles [cross tabulate A1 with D1-D13]?

5.09: A1 * D9	Institution Type	Public	Private, non-sectarian	Catholic	Jewish	Protestant	Other religion	Totals
Student Evaluations	Sum	214	178	149	3	315	11	870
	Row Sum %	24.6%	20.5%	17.1%	0.3%	36.2%	1.3%	100.0%
	Col Sum %	30.9%	31.1%	26.8%	42.9%	25.7%	32.4%	
	Table Sum %	6.9%	5.8%	4.8%	0.1%	10.2%	0.4%	28.2%
Student test scores	Sum	12	8	16	0	42	3	81
	Row Sum %	14.8%	9.9%	19.8%	0.0%	51.9%	3.7%	100.0%
	Col Sum %	1.7%	1.4%	2.9%	0.0%	3.4%	8.8%	
	Table Sum %	0.4%	0.3%	0.5%	0.0%	1.4%	0.1%	2.6%
Student career placement	Sum	6	4	5	0	19	0	34
	Row Sum %	17.6%	11.8%	14.7%	0.0%	55.9%	0.0%	100.0%
	Col Sum %	0.9%	0.7%	0.9%	0.0%	1.5%	0.0%	
	Table Sum %	0.2%	0.1%	0.2%	0.0%	0.6%	0.0%	1.1%
Other student performance	Sum	21	23	13	1	39	0	97
	Row Sum %	21.6%	23.7%	13.4%	1.0%	40.2%	0.0%	100.0%
	Col Sum %	3.0%	4.0%	2.3%	14.3%	3.2%	0.0%	
	Table Sum %	0.7%	0.7%	0.4%	0.0%	1.3%	0.0%	3.1%
Chair evaluations	Sum	155	118	120	2	246	5	646
	Row Sum %	24.0%	18.3%	18.6%	0.3%	38.1%	0.8%	100.0%
	Col Sum %	22.4%	20.6%	21.6%	28.6%	20.0%	14.7%	
	Table Sum %	5.0%	3.8%	3.9%	0.1%	8.0%	0.2%	20.9%
Dean evaluations	Sum	67	64	78	1	178	6	394
	Row Sum %	17.0%	16.2%	19.8%	0.3%	45.2%	1.5%	100.0%
	Col Sum %	9.7%	11.2%	14.0%	14.3%	14.5%	17.6%	
	Table Sum %	2.2%	2.1%	2.5%	0.0%	5.8%	0.2%	12.8%
Peer evaluations	Sum	128	86	78	0	162	3	457
	Row Sum %	28.0%	18.8%	17.1%	0.0%	35.4%	0.7%	100.0%
	Col Sum %	18.5%	15.0%	14.0%	0.0%	13.2%	8.8%	
	Table Sum %	4.1%	2.8%	2.5%	0.0%	5.2%	0.1%	14.8%
Self-evaluations	Sum	89	92	97	0	227	6	511
	Row Sum %	17.4%	18.0%	19.0%	0.0%	44.4%	1.2%	100.0%
	Col Sum %	12.9%	16.1%	17.4%	0.0%	18.5%	17.6%	
	Table Sum %	2.9%	3.0%	3.1%	0.0%	7.3%	0.2%	16.5%
Totals	Sum Total	692	573	556	7	1228	34	3090
	Col Sum Total	100.0%	100.0%	100.0%	100.0%	100.0%	100.0%	
	Table Sum Total							
	Total	22.4%	18.5%	18.0%	0.2%	39.7%	1.1%	100.0%

A1. Which of the following descriptions best characterizes your institution?

(Mark (X) only one.)

- 1 Public
- 2 Private, non-sectarian
- 3 Catholic
- 4 Jewish
- 5 Protestant
- 6 Other religion

D9. Are any of the following used in assessing the teaching performance of faculty at your institution? (Mark (X) for all that apply.)

- a. Student evaluations
- b. Student test scores
- c. Student career placement
- d. Other measures of student performance
- e. Department/division chair evaluations
- f. Dean evaluations
- h. Peer evaluations
- i. Self-evaluations

What is the relationship between institutional affiliation and faculty profiles [cross tabulate A1 with D1-D13]?

5.10: A1* D10

	Institution Type	Public	Private, non-sectarian	Catholic	Jewish	Protestant	Other religion	Totals
Male fac reviewed	Sum	97	72	107	2	169	4	451
	Row Sum %	21.5%	16.0%	23.7%	0.4%	37.5%	0.9%	100.0%
	Col Sum %	31.9%	33.5%	38.2%	25.0%	32.6%	66.7%	
	Table Sum %	7.3%	5.4%	8.0%	0.2%	12.7%	0.3%	33.9%
Male fac hired	Sum	60	38	32	1	61	2	194
	Row Sum %	30.9%	19.6%	16.5%	0.5%	31.4%	1.0%	100.0%
	Col Sum %	19.7%	17.7%	11.4%	12.5%	11.8%	33.3%	
	Table Sum %	4.5%	2.9%	2.4%	0.1%	4.6%	0.2%	14.6%
Male fac hired to tenure track	Sum	99	77	95	2	173	0	446
	Row Sum %	22.2%	17.3%	21.3%	0.4%	38.8%	0.0%	100.0%
	Col Sum %	32.6%	35.8%	33.9%	25.0%	33.4%	0.0%	
	Table Sum %	7.4%	5.8%	7.1%	0.2%	13.0%	0.0%	33.5%
Male fac hired non-tenure	Sum	48	28	46	3	115	0	240
	Row Sum %	20.0%	11.7%	19.2%	1.3%	47.9%	0.0%	100.0%
	Col Sum %	15.8%	13.0%	16.4%	37.5%	22.2%	0.0%	
	Table Sum %	3.6%	2.1%	3.5%	0.2%	8.6%	0.0%	18.0%
Totals	Sum Total	304	215	280	8	518	6	1331
	Col Sum Total	100.0%	100.0%	100.0%	100.0%	100.0%	100.0%	
	Table Sum Total	22.8%	16.2%	21.0%	0.6%	38.9%	0.5%	100.0%

A1. Which of the following descriptions best characterizes your institution?

(Mark (X) only one.)

- 1 Public
- 2 Private, non-sectarian
- 3 Catholic
- 4 Jewish
- 5 Protestant
- 6 Other religion

D10-D11. Since the 1996-1997 academic year, how many full-time faculty members in your department or program were reviewed for tenure and hired to tenure, to tenure-track, and to non-tenure track? (Write in numbers. If none, enter "0".)

Male(D10) Female(D11)

Full-time faculty members reviewed for tenure a. _____ a. _____

Full-time faculty members hired to tenure b. _____ b. _____

Full-time faculty members hired to tenure track c. _____ c. _____

Full-time faculty members hired to non-tenure track d. _____ d. _____

What is the relationship between institutional affiliation and faculty profiles [cross tabulate A1 with D1-D13]?

5.11: A1* D11	Institution Type	Private, non-sectarian					Other religion	Totals
		Public	Catholic	Jewish	Protestant			
Female fac reviewed	Sum	41	39	55	3	28	1	167
	Row Sum %	24.6%	23.4%	32.9%	1.8%	16.8%	0.6%	100.0%
	Col Sum %	28.3%	28.5%	36.9%	33.3%	20.6%	33.3%	
	Table Sum %	7.1%	6.7%	9.5%	0.5%	4.8%	0.2%	28.8%
Female fac tenured	Sum	14	12	18	1	12	1	58
	Row Sum %	24.1%	20.7%	31.0%	1.7%	20.7%	1.7%	100.0%
	Col Sum %	9.7%	8.8%	12.1%	11.1%	8.8%	33.3%	
	Table Sum %	2.4%	2.1%	3.1%	0.2%	2.1%	0.2%	10.0%
Female fac hired to tenure track	Sum	57	52	49	1	57	1	217
	Row Sum %	26.3%	24.0%	22.6%	0.5%	26.3%	0.5%	100.0%
	Col Sum %	39.3%	38.0%	32.9%	11.1%	41.9%	33.3%	
	Table Sum %	9.8%	9.0%	8.5%	0.2%	9.8%	0.2%	37.5%
Female fac hired non-tenure	Sum	33	34	27	4	39	0	137
	Row Sum %	24.1%	24.8%	19.7%	2.9%	28.5%	0.0%	100.0%
	Col Sum %	22.8%	24.8%	18.1%	44.4%	28.7%	0.0%	
	Table Sum %	5.7%	5.9%	4.7%	0.7%	6.7%	0.0%	23.7%
Totals	Sum Total	145	137	149	9	136	3	579
	Col Sum Total	100.0%	100.0%	100.0%	100.0%	100.0%	100.0%	
	Table Sum Total	25.0%	23.7%	25.7%	1.6%	23.5%	0.5%	100.0%

A1. Which of the following descriptions best characterizes your institution?

(Mark (X) only one.)

- 1 Public
- 2 Private, non-sectarian
- 3 Catholic
- 4 Jewish
- 5 Protestant
- 6 Other religion

D10-D11. Since the 1996-1997 academic year, how many full-time faculty members in your department or program were reviewed for tenure and hired to tenure, to tenure-track, and to non-tenure track? (Write in numbers. If none, enter "0".)

		Male(D10)	Female(D11)
Full-time faculty members reviewed for tenure	a. _____	a. _____	
Full-time faculty members hired to tenure		b. _____	b. _____
Full-time faculty members hired to tenure track	c. _____	c. _____	
Full-time faculty members hired to non-tenure track		d. _____	d. _____

What is the relationship between institutional affiliation and faculty profiles [cross tabulate A1 with D1-D13]?

5.12: A1 * D12

	Institution Type	Public	Private, non-sectarian	Catholic	Jewish	Protestant	Other religion	Totals
Male tenured	Sum	628	360	461	1	640	8	2098
	Row Sum %	29.9%	17.2%	22.0%	0.0%	30.5%	0.4%	100.0%
	Col Sum %	49.2%	42.9%	40.4%	4.5%	30.1%	14.5%	
	Table Sum %	11.5%	6.6%	8.4%	0.0%	11.7%	0.1%	38.4%
Male tenure track	Sum	116	118	160	2	267	3	666
	Row Sum %	17.4%	17.7%	24.0%	0.3%	40.1%	0.5%	100.0%
	Col Sum %	9.1%	14.1%	14.0%	9.1%	12.5%	5.5%	
	Table Sum %	2.1%	2.2%	2.9%	0.0%	4.9%	0.1%	12.2%
Male LT contracts	Sum	48	59	53	8	284	4	456
	Row Sum %	10.5%	12.9%	11.6%	1.8%	62.3%	0.9%	100.0%
	Col Sum %	3.8%	7.0%	4.6%	36.4%	13.3%	7.3%	
	Table Sum %	0.9%	1.1%	1.0%	0.1%	5.2%	0.1%	8.3%
Male terminal contracts	Sum	34	28	22	3	109	0	196
	Row Sum %	17.3%	14.3%	11.2%	1.5%	55.6%	0.0%	100.0%
	Col Sum %	2.7%	3.3%	1.9%	13.6%	5.1%	0.0%	
	Table Sum %	0.6%	0.5%	0.4%	0.1%	2.0%	0.0%	3.6%
Male joint appts	Sum	28	41	15	1	72	14	171
	Row Sum %	16.4%	24.0%	8.8%	0.6%	42.1%	8.2%	100.0%
	Col Sum %	2.2%	4.9%	1.3%	4.5%	3.4%	25.5%	
	Table Sum %	0.5%	0.8%	0.3%	0.0%	1.3%	0.3%	3.1%
Male PT positions 96-97	Sum	422	233	431	7	757	26	1876
	Row Sum %	22.5%	12.4%	23.0%	0.4%	40.4%	1.4%	100.0%
	Col Sum %	33.1%	27.8%	37.7%	31.8%	35.6%	47.3%	
	Table Sum %	7.7%	4.3%	7.9%	0.1%	13.9%	0.5%	34.3%
Totals	Sum Total	1276	839	1142	22	2129	55	5463
	Col Sum Total	100.0%	100.0%	100.0%	100.0%	100.0%	100.0%	
	Table Sum Total	23.4%	15.4%	20.9%	0.4%	39.0%	1.0%	100.0%

A1. Which of the following descriptions best characterizes your institution?

(Mark (X) only one.)

- 1 Public
- 2 Private, non-sectarian
- 3 Catholic
- 4 Jewish
- 5 Protestant
- 6 Other religion

D12-D13. In the 1996-1997 academic year, how many positions (i.e. salary lines) did your department or program support? (Write in numbers. If none, enter "0".)

Full-time positions –		Male (D1)	Female (D2)
Tenured positions	a. _____	a. _____	
Tenure track positions		b. _____	b. _____
Long-term contract positions	c. _____	c. _____	
Terminal contract positions	d. _____	d. _____	

Joint appointments e. _____ e. _____

Part-time positions (Include lecturers, adjuncts, etc. Do not include your institution's graduate students or any persons counted on lines a to e.)

f. _____ f. _____

What is the relationship between institutional affiliation and faculty profiles [cross tabulate A1 with D1-D13]?

5.13: A1 * D13	Institution Type	Public	Private, non-sectarian	Catholic	Jewish	Protestant	Other religion	Totals
Female tenured	Sum	137	87	150	1	67	0	442
	Row Sum %	31.0%	19.7%	33.9%	0.2%	15.2%	0.0%	1
	Col Sum %	31.5%	27.9%	27.4%	7.7%	16.4%	0.0%	
	Table Sum %	7.9%	5.0%	8.7%	0.1%	3.9%	0.0%	0.2552
Female tenure track	Sum	74	65	79	0	66	1	285
	Row Sum %	26.0%	22.8%	27.7%	0.0%	23.2%	0.4%	1
	Col Sum %	17.0%	20.8%	14.4%	0.0%	16.1%	6.3%	
	Table Sum %	4.3%	3.8%	4.6%	0.0%	3.8%	0.1%	0.16455
Female long term contracts	Sum	14	31	33	8	29	0	115
	Row Sum %	12.2%	27.0%	28.7%	7.0%	25.2%	0.0%	1
	Col Sum %	3.2%	9.9%	6.0%	61.5%	7.1%	0.0%	
	Table Sum %	0.8%	1.8%	1.9%	0.5%	1.7%	0.0%	0.0664
Female terminal contracts	Sum	23	20	13	1	29	0	86
	Row Sum %	26.7%	23.3%	15.1%	1.2%	33.7%	0.0%	1
	Col Sum %	5.3%	6.4%	2.4%	7.7%	7.1%	0.0%	
	Table Sum %	1.3%	1.2%	0.8%	0.1%	1.7%	0.0%	0.04965
Female joint appts	Sum	10	13	8	0	7	1	39
	Row Sum %	25.6%	33.3%	20.5%	0.0%	17.9%	2.6%	1
	Col Sum %	2.3%	4.2%	1.5%	0.0%	1.7%	6.3%	
	Table Sum %	0.6%	0.8%	0.5%	0.0%	0.4%	0.1%	0.02252
Female PT positions 96-97	Sum	177	96	264	3	211	14	765
	Row Sum %	23.1%	12.5%	34.5%	0.4%	27.6%	1.8%	1
	Col Sum %	40.7%	30.8%	48.3%	23.1%	51.6%	87.5%	
	Table Sum %	10.2%	5.5%	15.2%	0.2%	12.2%	0.8%	0.44169
Totals	Sum Total	435	312	547	13	409	16	1732
	Col Sum Total	100.0%	100.0%	100.0%	100.0%	100.0%	100.0%	
	Table Sum Total	25.1%	18.0%	31.6%	0.8%	23.6%	0.9%	100.0%

A1. Which of the following descriptions best characterizes your institution?

(Mark (X) only one.)

- 1 Public
- 2 Private, non-sectarian
- 3 Catholic
- 4 Jewish
- 5 Protestant
- 6 Other religion

D12-D13. In the 1996-1997 academic year, how many positions (i.e. salary lines) did your department or program support? (Write in numbers. If none, enter "0".)

Full-time positions –

Male (D1) Female (D2)

Tenured positions
Tenure track positions

a. _____ a. _____
b. _____ b. _____

Long-term contract positions c. _____ c. _____
Terminal contract positions d. _____ d. _____
Joint appointments e. _____ e. _____

Part-time positions (Include lecturers, adjuncts, etc. Do not include your institution's graduate students or any persons counted on lines a to e.)
f. _____ f. _____

What is the relationship between institutional affiliation and course offerings [cross tabulate A1 with B1 to B4]?

Percentage reported is a function of responding institutions for that institutional category (e.g., of 221 Public institutions responding to B1a, 164 of 221, or 74.21%, offer Intro to World Religions

Top 10 rankings by Institution Type

6.01: A1 * B1

		Public	
1	Intro to World Religions	164	74.21%
2	Christian - New Testament	157	71.04%
3	Intro to Religion	143	64.71%
4	Christian - Old Testament	139	62.90%
5	Intro to Bible	136	61.54%
6	Judaism	127	57.47%
7	Christian - Historical	125	56.56%
8	Intro to Eastern Religions	124	56.11%
9	Philosophy of Religion	113	51.13%
10	Intro to Western Religions	111	50.23%
Total Institutions		221	100.00%

Christian - New Testament	138	75.82%
Christian - Old Testament	121	66.48%
Christian - Historical	120	65.93%
Intro to Bible	114	62.64%
Intro to World Religions	108	59.34%
Judaism	101	55.49%
Intro to Religion	96	52.75%
Comparative	93	51.10%
Christian - Theological	93	51.10%
American Religion	92	50.55%
Total Institutions	182	100.00%

Private, non-sectarian

138	75.82%
121	66.48%
120	65.93%
114	62.64%
108	59.34%
101	55.49%
96	52.75%
93	51.10%
93	51.10%
92	50.55%
182	100.00%

		Catholic	
1	Christian - New Testament	144	95.36%
2	Christian - Theological	136	90.07%
3	Christian - Old Testament	135	89.40%
4	Christian - Ethics	133	88.08%
5	Christian - Historical	119	78.81%
6	Intro to Religion	117	77.48%
7	Intro to Bible	111	73.51%
8	Intro to World Religions	111	73.51%
9	Ethics	78	51.66%
10	Comparative	69	45.70%
Total Institutions		151	100.00%

Christian - New Testament	300	92.60%
Christian - Old Testament	299	92.30%
Christian - Theological	269	83.00%
Christian - Historical	264	81.50%
Intro to Bible	248	76.50%
Intro to World Religions	221	68.20%
Christian - Ethics	218	67.30%
Philosophy of Religion	156	48.10%
Ethics	142	43.80%
Comparative	139	42.90%
Total Institutions	324	100.00%

Protestant

300	92.60%
299	92.30%
269	83.00%
264	81.50%
248	76.50%
221	68.20%
218	67.30%
156	48.10%
142	43.80%
139	42.90%
324	100.00%

Jewish and Other Religion categories yielded insignificant cross-sample sizes

What is the relationship between institutional affiliation and course offerings [cross tabulate A1 with B1 to B4]?

6.02: A1 * B2: Percentage reported is a function of total number of courses tabulated for that institutional category (e.g., of 6099 courses taught at Public institutions, 723 of 6099, or 11.85%, are Intro to World Religions courses.

Rank	Courses	% of classes taught		Courses	% of classes taught		Courses	% of classes taught	
		Public			Private, non-sectarian			Protestant	
1	Intro to World Religions	723	11.85%	Intro to Bible Christian - New Testament	587	10.77%	Christian - New Testament	1997	16.07%
2	Intro to Religion	524	8.59%	Intro to Religion	416	7.63%	Intro to Bible Christian - Old Testament	1890	15.21%
3	Judaism	377	6.18%	Judaism	410	7.52%	Christian - Theological	1685	13.56%
4	Christian - New Testament	337	5.53%	Intro to Eastern Religions	340	6.24%	Intro to Religion	1369	11.02%
5	Ethics	315	5.16%	Christian - Old Testament	335	6.15%	Christian - Historical	805	6.48%
6	Other	285	4.67%	Intro to World Religions	317	5.82%	Other	802	6.45%
7	Christian - Old Testament	269	4.41%	Intro to Western Religions	301	5.52%	Christian - Ethics	567	4.56%
8	Comparative	266	4.36%	Christian - Theological	297	5.45%	Intro to World Religions	502	4.04%
9	Intro to Eastern Religions	264	4.33%	Christian - Historical	251	4.61%	Intro to Western Religions	394	3.17%
10	Intro to Bible	260	4.26%	Total courses	238	4.37%	Total courses	346	2.78%
	Total courses	6099	100.00%	Total courses	5450	100.00%	Total courses	12426	100.00%

Rank	Courses	% of classes taught		Courses	% of classes taught		Courses	% of classes taught	
		Jewish			Catholic			Other religion	
1	Other	300	48.15%	Christian - Theological	1154	17.86%	Christian - New Testament	76	20.94%
2	Arts, Literature and Religion	200	32.10%	Intro to Religion	962	14.89%	Christian - Old Testament	53	14.60%
3	Judaism	62	9.95%	Intro to Bible	658	10.18%	Christian - Theological	53	14.60%
4	Gender & Sexuality	10	1.61%	Christian - Ethics	611	9.46%	Intro to Bible	49	13.50%
5	American Religion	10	1.61%	Christian - New Testament	466	7.21%	Christian - Historical	42	11.57%
6	Philosophy of Religion	9	1.44%	Christian - Historical	362	5.60%	Intro to Religion	26	7.16%
7	Intro to Sacred Texts	8	1.28%	Christian - Old Testament	303	4.69%	Christian - Cultural	11	3.03%
8	Intro to Bible	7	1.12%	Intro to World Religions	292	4.52%	Intro to World Religions	10	2.75%
9	Ethics	6	0.96%	Ethics	243	3.76%	Christian - Ethics	9	2.48%
10	Ritual and Performance	6	0.96%	Intro to Western Religions	134	2.07%	Racial and Ethnic Studies	6	1.65%
	Total courses	623	100.00%	Total courses	6461	100.00%	Total courses	363	100.00%

What is the relationship between institutional affiliation and course offerings [cross tabulate A1 with B1 to B4]?

6.03: A1 * B3: Percentage reported is a function of responding institutions for that institutional category (e.g., of 144 Public institutions responding to B3a, 70 of 144, or 48.61%, of institutions require Intro to World Religions for the major.

Rank	Courses	% of Institutions		Courses	% of Institutions		Courses	% of Institutions	
		Public			Private, non-sectarian			Catholic	
1	Intro to World Religions	70	48.61%	Christian - New Testament	65	47.10%	Christian - New Testament	105	80.77%
2	Intro to Religion	65	45.14%	Christian - Old Testament	60	43.48%	Christian - Old Testament	97	74.62%
3	Intro to Eastern Religions	49	34.03%	Intro to World Religions	50	36.23%	Christian - Theological	89	68.46%
4	Christian - Old Testament	47	32.64%	Intro to Bible	48	34.78%	Christian - Ethics	88	67.69%
5	Christian - New Testament	47	32.64%	Intro to Religion	47	34.06%	Christian - Historical	82	63.08%
6	Intro to Bible	41	28.47%	Christian - Historical	46	33.33%	Intro to Bible	79	60.77%
7	Intro to Western Religions	41	28.47%	Christian - Theological	46	33.33%	Intro to Religion	75	57.69%
8	Christian - Historical	37	25.69%	Philosophy of Religion	32	23.19%	Intro to World Religions	50	38.46%
9	Philosophy of Religion	35	24.31%	Comparative	30	21.74%	Ethics	41	31.54%
10	Judaism	34	23.61%	Intro to Eastern Religions	29	21.01%	Christian - Cultural	19	14.62%
	Institutions	144	100.00%	Institutions	138	100.00%	Institutions	130	100.00%

Rank	Courses	% of Institutions		Courses	% of Institutions	
		Protestant			Other religion	
1	Christian - New Testament	240	83.33%	Christian - New Testament	10	90.91%
2	Christian - Old Testament	239	82.99%	Christian - Old Testament	9	81.82%
3	Christian - Theological	209	72.57%	Christian - Theological	8	72.73%
4	Intro to Bible	185	64.24%	Christian - Historical	7	63.64%
5	Christian - Historical	184	63.89%	Intro to Bible	6	54.55%
6	Christian - Ethics	130	45.14%	Intro to World Religions	5	45.45%
7	Intro to World Religions	115	39.93%	Christian - Ethics	4	36.36%
8	Intro to Religion	81	28.13%	Intro to Religion	4	36.36%
9	Ethics	80	27.78%	Ethics	3	27.27%
10	Philosophy of Religion	69	23.96%	Philosophy of Religion	3	27.27%
	Institutions	288	100.00%	Institutions	11	100.00%

Jewish category yielded insignificant cross-sample sizes

What is the relationship between institutional affiliation and course offerings [cross tabulate A1 with B1 to B4]?

6.04: A1 * B4: Percentage reported is a function of responding institutions for that institutional category (e.g., of 192 Public institutions responding to B4a, 119 of 192, or 61.98%, of institutions list Intro to World Religions as a general education requirement.

Rank	Courses	% of Institutions		Courses	% of Institutions		Courses	% of Institutions	
		Public			Private, non-sectarian			Catholic	
1	Intro to World Religions	119	61.98%	Christian - New Testament	89	55.63%	Christian - New Testament	117	82.39%
2	Intro to Religion	100	52.08%	Christian - Old Testament	81	50.63%	Christian - Old Testament	109	76.76%
3	Christian - New Testament	85	44.27%	Intro to Bible	77	48.13%	Christian - Ethics	107	75.35%
4	Christian - Old Testament	82	42.71%	Intro to World Religions	74	46.25%	Christian - Theological	101	71.13%
5	Intro to Bible	76	39.58%	Christian - Historical	72	45.00%	Intro to Religion	96	67.61%
6	Intro to Eastern Religions	74	38.54%	Intro to Religion	68	42.50%	Intro to Bible	93	65.49%
7	Intro to Western Religions	69	35.94%	Judaism	65	40.63%	Christian - Historical	87	61.27%
8	Christian - Historical	62	32.29%	American Religion	63	39.38%	Intro to World Religions	83	58.45%
9	Judaism	61	31.77%	Ethics	62	38.75%	Ethics	57	40.14%
10	Comparative	58	30.21%	Buddhism	59	36.88%	Comparative	44	30.99%
	Institutions	192	100.00%	Institutions	160	100.00%	Institutions	142	100.00%

Rank	Courses	% of Institutions		Courses	% of Institutions	
		Protestant			Other religion	
1	Christian - New Testament	210	68.63%	Christian - New Testament	8	66.67%
2	Christian - Old Testament	208	67.97%	Christian - Old Testament	7	58.33%
3	Intro to Bible	195	63.73%	Christian - Historical	7	58.33%
4	Christian - Theological	143	46.73%	Christian - Theological	6	50.00%
5	Christian - Historical	138	45.10%	Intro to World Religions	5	41.67%
6	Intro to World Religions	129	42.16%	Intro to Religion	5	41.67%
7	Christian - Ethics	118	38.56%	Intro to Bible	4	33.33%
8	Intro to Religion	99	32.35%	Christian - Ethics	3	25.00%
9	Ethics	89	29.08%	Ethics	3	25.00%
10	Comparative	74	24.18%	American Religion	3	25.00%
	Institutions	306	100.00%	Institutions	12	100.00%

Jewish category yielded insignificant cross-sample sizes

What is the relationship between institutional affiliation and undergraduate education [cross tabulate A1 with C1 – C8]?

7.01: A1 * C1

	Public		Private, non-sectarian		Catholic		Jewish		Protestant		Other religion		Group Total	
	Sum	Row Sum %	Sum	Row Sum %	Sum	Row Sum %	Sum	Row Sum %	Sum	Row Sum %	Sum	Row Sum %	Sum	Row Sum %
# Courses 99-00	6969	22.5%	5108	16.5%	6163	19.9%	106	.3%	11801	38.2%	777	2.5%	30924	100.0%
# Courses 96-97	6781	24.0%	4725	16.7%	5687	20.1%	89	.3%	10274	36.3%	746	2.6%	28302	100.0%

A1. Which of the following descriptions best characterizes your institution?

(Mark (X) only one.)

- 1 Public
- 2 Private, non-sectarian
- 3 Catholic
- 4 Jewish
- 5 Protestant
- 6 Other religion

C1. How many undergraduate courses did your department or program offer in the 1999-2000 and 1996-1997 academic years

a. _____

Number of undergraduate courses offered in 1999-2000

b. _____

Number of undergraduate courses offered in 1996-1997

What is the relationship between institutional affiliation and undergraduate education [cross tabulate A1 with C1 – C8]?

7.02: A1 * C2

	Public		Private, non-sectarian		Catholic		Jewish		Protestant		Other religion		Group Total	
	Sum	Row Sum %	Sum	Row Sum %	Sum	Row Sum %	Sum	Row Sum %	Sum	Row Sum %	Sum	Row Sum %	Sum	Row Sum %
Enrollment 99-00	201262	29.4%	83365	12.2%	141106	20.6%	945	.1%	246079	35.9%	12329	1.8%	685086	100.0%
Enrollment 96-97	174999	29.5%	73448	12.4%	125938	21.2%	610	.1%	208441	35.1%	10533	1.8%	593969	100.0%

A1. Which of the following descriptions best characterizes your institution?

(Mark (X) only one.)

- 1 Public
- 2 Private, non-sectarian
- 3 Catholic
- 4 Jewish
- 5 Protestant
- 6 Other religion

C2. What was the total enrollment in your department's or program's undergraduate courses in the 1999-2000 and 1996-1997 academic years? (Please provide total enrollment of all sections of all courses. If none, enter "0".)

a. _____

Total enrollment in undergraduate courses in 1999-2000

b. _____

Total enrollment in undergraduate courses in 1996-1997

What is the relationship between institutional affiliation and undergraduate education [cross tabulate A1 with C1 – C8]?

7.03: A1 * C3

			Institution Type						Total
			Public	Private, non-sectarian	Catholic	Jewish	Protestant	Other religion	
Program activities	Honors program	Cases	116	98	61	1	122	5	403
		Row Response %	28.8%	24.3%	15.1%	.2%	30.3%	1.2%	100.0%
	Grant/scholarship/prize	Cases	101	87	54	1	187	7	437
		Row Response %	23.1%	19.9%	12.4%	.2%	42.8%	1.6%	100.0%
	Internship	Cases	47	94	89		236	8	474
		Row Response %	9.9%	19.8%	18.8%		49.8%	1.7%	100.0%
	Partnerships with primary or secondary schools	Cases	12	13	9	1	18	2	55
		Row Response %	21.8%	23.6%	16.4%	1.8%	32.7%	3.6%	100.0%
	Associations or clubs for majors	Cases	95	42	57		122	2	318
		Row Response %	29.9%	13.2%	17.9%		38.4%	.6%	100.0%
	Public lecture series	Cases	113	94	78	3	163	6	457
		Row Response %	24.7%	20.6%	17.1%	.7%	35.7%	1.3%	100.0%
	Visiting scholar program	Cases	49	49	25	1	63	4	191
		Row Response %	25.7%	25.7%	13.1%	.5%	33.0%	2.1%	100.0%
	Newsletter for alumni	Cases	55	34	24	2	65	3	183
		Row Response %	30.1%	18.6%	13.1%	1.1%	35.5%	1.6%	100.0%

A1. Which of the following descriptions best characterizes your institution?

(Mark (X) only one.)

- 1 Public
- 2 Private, non-sectarian
- 3 Catholic
- 4 Jewish
- 5 Protestant
- 6 Other religion

C3. Does your department or program offer or participate in any of the following program activities? (Mark (X) for all that apply)

- a. Honors program for majors
- b. Grant/scholarship/prize for majors
- c. Internship or service learning program
- d. Partnerships with primary or secondary schools
- e. Associations or clubs for majors
- f. Public lecture series
- g. Visiting scholar program
- h. Newsletter for alumni or other interested persons
- i. World Wide Web site
- k. _____

Write in WWW address

What is the relationship between institutional affiliation and undergraduate education [cross tabulate A1 with C1 – C8]?

7.04: A1 * C4

Courses req'd for major	Public	% of Institutions	Private, non-sectarian	% of Institutions	Catholic	% of Institutions	Protestant	% of Institutions
6	12	9.45%	2	1.55%	1	0.96%	3	1.44%
7	5	3.94%	1	0.78%			3	1.44%
8	5	3.94%	25	19.38%	5	4.81%	19	9.13%
9	14	11.02%	20	15.50%	5	4.81%	24	11.54%
10	31	24.41%	35	27.13%	35	33.65%	47	22.60%
11	20	15.75%	11	8.53%	15	14.42%	19	9.13%
12	21	16.54%	17	13.18%	30	28.85%	37	17.79%
13	2	1.57%	5	3.88%	3	2.88%	12	5.77%
14	9	7.09%	5	3.88%	5	4.81%	23	11.06%
15	3	2.36%	3	2.33%	4	3.85%	13	6.25%
16	5	3.94%	5	3.88%	1	0.96%	8	3.85%
Institutions	127	100.00%	129	100.00%	104	100.00%	208	100.00%

- Valid responses to C4 (Total number of courses required for major) have been limited to 6 and 16 courses, comprising 75.2% of all answers. Other responses were deemed mispecified due to the nature of the question.

- Jewish and Other Religion categories yielded insignificant cross-sample sizes

What is the relationship between institutional affiliation and undergraduate education [cross tabulate A1 with C1 – C8]?

7.05: A1 * C5

			Institution Type						Total
			Public	Private, non-sectarian	Catholic	Jewish	Protestant	Other religion	
% of credit hours C4 represents	24% or less	Count	64	49	44		76	4	237
		Row %	27.0%	20.7%	18.6%		32.1%	1.7%	100.0%
	25-49%	Count	95	92	83	1	178	3	452
		Row %	21.0%	20.4%	18.4%	.2%	39.4%	.7%	100.0%
	50-74%	Count	12	11	4	1	32	1	61
		Row %	19.7%	18.0%	6.6%	1.6%	52.5%	1.6%	100.0%
	75% or greater	Count	3	2	1		17	2	25
		Row %	12.0%	8.0%	4.0%		68.0%	8.0%	100.0%

A1. Which of the following descriptions best characterizes your institution?

(Mark (X) only one.)

- 1 Public
- 2 Private, non-sectarian
- 3 Catholic
- 4 Jewish
- 5 Protestant
- 6 Other religion

C5. What percentage of the total course credit/credit hours your institution requires for graduation does the number of courses in C4 represent?

- 1 24% or less
- 2 25-49%
- 3 50%-74%
- 4 75% or greater

What is the relationship between institutional affiliation and undergraduate education [cross tabulate A1 with C1 – C8]?

7.06: A1 * C6

			Institution Type						Total
			Public	Private, non-sectarian	Catholic	Jewish	Protestant	Other religion	
Comp Exam	Required	Count	7	24	19		49	3	102
		Subtable %	4.8%	19.5%	19.4%		21.2%	50.0%	16.8%
	Optional	Count	5	4	1	1	8		19
		Subtable %	3.4%	3.3%	1.0%	33.3%	3.5%		3.1%
	Not Applicable	Count	133	95	78	2	174	3	485
		Subtable %	91.7%	77.2%	79.6%	66.7%	75.3%	50.0%	80.0%
Thesis	Required	Count	34	50	46		50	1	181
		Subtable %	20.7%	34.2%	43.4%		22.2%	16.7%	27.8%
	Optional	Count	34	44	11	2	32	1	124
		Subtable %	20.7%	30.1%	10.4%	66.7%	14.2%	16.7%	19.1%
	Not Applicable	Count	96	52	49	1	143	4	345
		Subtable %	58.5%	35.6%	46.2%	33.3%	63.6%	66.7%	53.1%
Seminar/Capstone	Required	Count	73	98	74	2	175	5	427
		Subtable %	42.9%	68.5%	62.7%	66.7%	65.3%	71.4%	60.2%
	Optional	Count	16	10	4		12		42
		Subtable %	9.4%	7.0%	3.4%		4.5%		5.9%
	Not Applicable	Count	81	35	40	1	81	2	240
		Subtable %	47.6%	24.5%	33.9%	33.3%	30.2%	28.6%	33.9%
Portfolio	Required	Count	15	21	12		58	3	109
		Subtable %	10.3%	17.4%	12.2%		25.3%	50.0%	18.1%
	Optional	Count	7	6	12		28	1	54
		Subtable %	4.8%	5.0%	12.2%		12.2%	16.7%	9.0%
	Not Applicable	Count	124	94	74	3	143	2	440
		Subtable %	84.9%	77.7%	75.5%	100.0%	62.4%	33.3%	73.0%
Other	Required	Count	12	20	10		31	2	75
		Subtable %	13.8%	29.4%	16.7%		24.6%	50.0%	21.6%
	Optional	Count	2	1	4		5		12
		Subtable %	2.3%	1.5%	6.7%		4.0%		3.5%
	Not Applicable	Count	73	47	46	2	90	2	260
		Subtable %	83.9%	69.1%	76.7%	100.0%	71.4%	50.0%	74.9%

A1. Which of the following descriptions best characterizes your institution?

(Mark (X) only one.)

- 1 Public
- 2 Private, non-sectarian
- 3 Catholic
- 4 Jewish
- 5 Protestant
- 6 Other religion

C6. In addition to coursework, which of the following do undergraduate majors in your department or program complete? (Mark (X) only one for each student work product.)

- a. Comprehensive examination 1 2 3
- b. Thesis paper 1 2 3
- c. Senior seminar or "capstone course" 1 2 3
- d. Student portfolio 1 2 3
- e. Other (describe) 1 2 3

What is the relationship between institutional affiliation and undergraduate education [cross tabulate A1 with C1 – C8]?

7.07: A1 * C7

		Public	Private, non-sectarian	Catholic	Jewish	Protestant	Other religion	Group Total
Majors	Sum	5392	4721	3043	125	17350	563	31194
99-00	Row Sum %	17.3%	15.1%	9.8%	.4%	55.6%	1.8%	100.0%
Majors	Sum	4437	4019	2301	90	13562	418	24827
96-97	Row Sum %	17.9%	16.2%	9.3%	.4%	54.6%	1.7%	100.0%

7.07a: A1 * C7: Majors 99-00 by Institution Type

		Total	Mean	Median	Total %
Institution	Public	5392	31	19	17.3%
Type	Private, non-sectarian	4721	31	16	15.1%
	Catholic	3043	23	10	9.8%
	Jewish	125	42	30	.4%
	Protestant	17350	60	27	55.6%
	Other religion	563	80	67	1.8%
Group Total		31194	41	17	100.0%

7.07b: A1 * C7: Majors 96-97 by Institution Type

		Total	Mean	Median	Total %
Institution	Public	4437	26	15	17.9%
Type	Private, non-sectarian	4019	27	12	16.2%
	Catholic	2301	19	8	9.3%
	Jewish	90	30	30	.4%
	Protestant	13562	49	18	54.6%
	Other religion	418	70	36	1.7%
Group Total		24827	34	13	100.0%

A1. Which of the following descriptions best characterizes your institution?

(Mark (X) only one.)

- 1 Public
- 2 Private, non-sectarian
- 3 Catholic
- 4 Jewish
- 5 Protestant
- 6 Other religion

C7. How many undergraduates majored in religion in the 1999-2000 and 1996-1997 academic years?

(Write in the numbers. Count all undergraduates at the junior and senior levels who were declared majors in your department or program at the end of the fall term in the 1999-2000 and 1996-1997 academic years.)

a. _____ Undergraduates majoring in religion,
1999-2000

b. _____ Undergraduates majoring in religion,
1996-1997

What is the relationship between institutional affiliation and undergraduate education [cross tabulate A1 with C1 – C8]?

7.08: A1 * C8

		Public	Private, non-sectarian	Catholic	Jewish	Protestant	Other religion	Group Total
Male 99-00	Sum	899	950	521	10	3295	163	5838
	Row Sum %	15.4%	16.3%	8.9%	.2%	56.4%	2.8%	100.0%
Female 99-00	Sum	1137	868	607	45	2116	57	4830
	Row Sum %	23.5%	18.0%	12.6%	.9%	43.8%	1.2%	100.0%
Male 96-97	Sum	729	728	529	24	2628	135	4773
	Row Sum %	15.3%	15.3%	11.1%	.5%	55.1%	2.8%	100.0%
Female 96-97	Sum	924	693	576	35	1551	61	3840
	Row Sum %	24.1%	18.0%	15.0%	.9%	40.4%	1.6%	100.0%

A1. Which of the following descriptions best characterizes your institution?

(Mark (X) only one.)

- 1 Public
- 2 Private, non-sectarian
- 3 Catholic
- 4 Jewish
- 5 Protestant
- 6 Other religion

C8. How many undergraduate majors in your department or program received a bachelor's degree from your institution in the 1999-2000 and 1996-1997 academic years? (Write in the number. If none, enter "0".)

Majors receiving bachelor's degrees in 1999-2000:

- a. _____ Number of men
- b. _____ Number of women

Majors receiving bachelor's degrees in 1996-1997:

- c. _____ Number of men
- d. _____ Number of women

How many full-time women faculty were at each of five ranks in 1996-1997? [The sum of each category D13 a to D13 e]

8.00: Sum within D13 categories 96-97

	Sum
Female tenured	442
Female tenure track	285
Female long term contracts	115
Female terminal contracts	86
Female joint appts	39
Female PT positions	765

8.00a: Sum within D12 categories 96-97

	Sum
Male tenured	2098
Male tenure track	666
Male LT contracts	456
Male terminal contracts	196
Male joint appts	171
Male PT positions	1876

Female to Male Ratios:

96-97 Tenured: 442:2098 = 0.211

96-97 Tenure-track: 285:666 = 0.428

96-97 Long-term contract: 115:456 = 0.252

96-97 Terminal contract: 86:196 = 0.439

96-97 Joint appointments: 39:171 = 0.228

96-97 Part-time positions: 765:1876 = 0.408

D12-D13. In the 1996-1997 academic year, how many positions (i.e. salary lines) did your department or program support? (Write in numbers. If none, enter "0".)

Full-time positions –	Male (D1)	Female (D2)
Tenured positions	a. _____	a. _____
Tenure track positions	b. _____	b. _____
Long-term contract positions	c. _____	c. _____
Terminal contract positions	d. _____	d. _____
Joint appointments	e. _____	e. _____

Part-time positions (Include lecturers, adjuncts, etc. Do not include your institution's graduate students or any persons counted on lines a to e.)

f. _____ f. _____

How many full time women faculty were at each of five ranks in 1999-2000? [The sum of each category D2a to D2e]

9.00: Sum within D2 categories 99-00

	Sum
Female tenured	557
Female tenure track	361
Female long-term contract	181
Female terminal contract	114
Female joint appts	56
Female PT positions	1051

9.00a: Sum within D1 Categories 99-00

	Sum
Male Tenured	2391
Male tenure track	781
Male long-term contract	581
Male terminal contract	279
Male joint appts	218
Male PT Positions	2443

99-00 Tenured: $557:2391 = 0.233$

99-00 Tenure-track: $361:781 = 0.462$

99-00 Long-term contract: $181:581 = 0.312$

99-00 Terminal contract: $114:279 = 0.409$

99-00 Joint appointments: $56:218 = 0.257$

99-00 Part-time positions: $1051:2443 = 0.430$

D1-D2. In the 1999-2000 academic year, how many positions (i.e. salary lines) did your department or program support?

Full-time positions –		Male (D1)	Female (D2)
Tenured positions	a. _____	a. _____	
Tenure track positions		b. _____	b. _____
Long-term contract positions	c. _____	c. _____	
Terminal contract positions	d. _____	d. _____	
Joint appointments	e. _____	e. _____	

Part-time positions (Include lecturers, adjuncts, etc. Do not include your institution's graduate students or any persons counted on lines a to e.)

f. _____ f. _____

What is the ratio in 1999-2000 of the number of full-time women to full-time men in each of four academic ranks? [D6a to D5a; D6b to D5b; D6c to D5c; D6d to D5d]

10: Sums for total ratios

	N	Sum
Male FT Prof	851	1829
Male FT Assc	851	1062
Male FT Asst	851	825
Male FT Inst/other	851	654
Female FT Prof	851	255
Female FT Assc	851	335
Female FT Asst	851	418
Female FT Inst/Other	851	290
Valid N (listwise)	851	

Total Ratios (e.g., the sum of reported female full-time profs to that of male full-time profs):

Female FT Prof to Male FT Prof: $255:1829 = 0.139$ or about 1:7

Female FT Assc to Male FT Assc: $335:1062 = 0.315$ or about 1:3

Female FT Asst to Male FT Asst: $418:825 = 0.507$ or about 1:2

Female FT Inst/Other to Male FT Inst/Other: $290:654 = 0.443$ or about 1:2

D5-D6. During the 1999-2000 academic year, how many full-time faculty members did your department or program have in each of the categories below? (Write in numbers. If none, enter "0".)

	Male(D5)	Female(D6)
Professor	a. _____	a. _____
Associate professor	b. _____	b. _____
Assistant professor	c. _____	c. _____
Instructor/Other	d. _____	d. _____

What is the ratio in 1999-2000 of the number of full-time women to full-time men in each of four academic ranks? [D6a to D5a; D6b to D5b; D6c to D5c; D6d to D5d]

**10.01: D6a:D5a (mean) Ratio Statistics
for Female FT Prof / Male FT Prof**

Mean	.138
------	------

What is the ratio in 1999-2000 of the number of full-time women to full-time men in each of four academic ranks? [D6a to D5a; D6b to D5b; D6c to D5c; D6d to D5d]

**10.02: D6b:D5b (mean) Ratio Statistics
for Female FT Assc / Male FT Assc**

Mean	.253
------	------

What is the ratio in 1999-2000 of the number of full-time women to full-time men in each of four academic ranks? [D6a to D5a; D6b to D5b; D6c to D5c; D6d to D5d]

**10.03: D6c:D5c (mean) Ratio Statistics
for Female FT Asst / Male FT Asst**

Mean	.380
------	------

What is the ratio in 1999-2000 of the number of full-time women to full-time men in each of four academic ranks? [D6a to D5a; D6b to D5b; D6c to D5c; D6d to D5d]

**10.04: D6d:D5d (mean) Ratio Statistics for
Female FT Inst/Other / Male FT Inst/other**

Mean	.390
------	------

Questions same as previous slide

What is the total number of courses taught by faculty members who were paid at a per-course rate [D7]? [The sum of the numbers] What is the mean and median number of courses taught by part-time faculty [D7]?

11.00 & 12.00: D7 Sum, mean, median number of courses at per course rate

99-00 Courses at per-course rate

N	Valid	822
	Missing	75
Mean		6.45
Median		4.00
Sum		5303

D7. In the 1999-2000 academic year, how many courses were taught by faculty members who were paid at a per-course rate? (Do not include courses taught by your institution's graduate students.)

_____ Write in Number

What is the mean and median pay per course for part-time faculty [D8]?

13.00: D8 Mean, median of per course rate

99-00 Per-course rate

N	Valid	736
	Missing	161
Mean		2444.73
Median		2000.00

D8. What is the pay per course for part-time faculty?

\$_____ Write in Amount

What is the total number of part-time men faculty reported in 1999-2000 [D1 f]? [Sum of the numbers]
 What is the total number of part-time women faculty reported in 1999-2000 [D2 f]? [Sum of the numbers]
 What is the total number of part-time men faculty reported in 1996-1997 [D12 f]? [Sum of the numbers]
 What is the total number of part-time women faculty reported in 1996-1997 [D13 f]? [Sum of the numbers]

14 - 17: D1f, D2f, D12f, D13f sums

	Sum
Male PT Positions 99-00	2443
Female PT positions 99-00	1051
Male PT positions 96-97	1876
Female PT positions 96-97	765

D1-D2. In the 1999-2000 academic year, how many positions (i.e. salary lines) did your department or program support?

Part-time positions (Include lecturers, adjuncts, etc. Do not include your institution's graduate students or any persons counted on lines a to e.)

f. _____ f. _____

D12-D13. In the 1996-1997 academic year, how many positions (i.e. salary lines) did your department or program support? (Write in numbers. If none, enter "0".)

Part-time positions (Include lecturers, adjuncts, etc. Do not include your institution's graduate students or any persons counted on lines a to e.)

f. _____ f. _____

What is the ratio of women adjuncts in 2000 [D2f] to men adjuncts in 2000 [D1f]?

Sum of Women adjuncts = 1051

Sum of Men adjuncts = 2443

Ratio of Women adjuncts to Men adjuncts = $1051 / 2443 = .43$ or 1 Woman to 2.3 Men

What is the ratio of all adjuncts [D1f plus D2f] to all full time faculty [D1a – e plus D2 a – e] in 2000?

Sum of adjuncts = 3494

Sum of full-time = 5519

Ratio of adjuncts to full-time = $3494 / 5519 = .63$ or 1 adjunct to 1.6 full-time positions

What is the ratio of all adjuncts [D1f plus D2f] to all full time faculty [D1a – e plus D2 a – e] in 2000?

D1-D2. In the 1999-2000 academic year, how many positions (i.e. salary lines) did your department or program support?

Full-time positions –	Male (D1)	Female (D2)
Tenured positions	a. _____	a. _____
Tenure track positions	b. _____	b. _____
Long-term contract positions	c. _____	c. _____
Terminal contract positions	d. _____	d. _____
Joint appointments	e. _____	e. _____

Part-time positions (Include lecturers, adjuncts, etc. Do not include your institution's graduate students or any persons counted on lines a to e.)

f. _____ f. _____

Classify the responses to questions 11 – 19 in terms of the various descriptions of departments or programs [A3 1 through 5.] (during 6/9 project meeting, "11-19" was revised to D1f, D2f, D7, D8, D12f, & D13f)

20.01, .02,.05, .06 : A3 * D1f, D2f, D12f, D13f

		Free-standing department	Combined department	Program that borrows faculty	Humanities or social science department	Research center	Group Total
Male PT Positions	Sum	1445	657	163	155	0	2420
99-00	Row Sum %	59.7%	27.1%	6.7%	6.4%	.0%	100.0%
Female PT positions	Sum	674	221	70	71	0	1036
99-00	Row Sum %	65.1%	21.3%	6.8%	6.9%	.0%	100.0%
Male PT positions	Sum	1045	576	112	129	.	1862
96-97	Row Sum %	56.1%	30.9%	6.0%	6.9%	.	100.0%
Female PT positions	Sum	455	187	59	55	.	756
96-97	Row Sum %	60.2%	24.7%	7.8%	7.3%	.	100.0%

A3. Which of the following descriptions best characterizes your department or program?

(Mark (X) only one.)

- 1 Free-standing department (e.g. "Department of Religious Studies")
- 2 Combined department (e.g. "Department of Religion and Philosophy")
- 3 Program that "borrows" faculty from a number of departments
- 4 Humanities or social science department or division
- 5 Research center

D1-D2. In the 1999-2000 academic year, how many positions (i.e. salary lines) did your department or program support?

Part-time positions (Include lecturers, adjuncts, etc. Do not include your institution's graduate students or any persons counted on lines a to e.)

f. _____ f. _____

D12-D13. In the 1996-1997 academic year, how many positions (i.e. salary lines) did your department or program support? (Write in numbers. If none, enter "0".)

Part-time positions (Include lecturers, adjuncts, etc. Do not include your institution's graduate students or any persons counted on lines a to e.)

f. _____ f. _____

Classify the responses to D7 in terms of the various descriptions of departments or programs [A3
1 through 5.]

20.03: A3 * D7

Program type

Courses at per course rate	Free-standing department	% Program Type	Combined department	% Program Type	Program that borrows faculty	% Program Type	Humanities or social science department	% Program Type	Research center	% Program Type	Total
0 - 4	234	52.35%	154	54.23%	45	61.64%	56	70.00%			489
5 - 9	95	21.25%	63	22.18%	8	10.96%	7	8.75%			173
6 - 10	37	8.28%	26	9.15%	4	5.48%	2	2.50%			69
11 - 15	16	3.58%	6	2.11%	2	2.74%	1	1.25%			25
20 & up	65	14.54%	35	12.32%	14	19.18%	14	17.50%	1	100.00%	129
Total	447	100.00%	284	100.00%	73	100.00%	80	100.00%	1	100.00%	885

Percentage reported is a function of responding institutions for that Program-type category (e.g., of 447 free-standing departments responding to D7, 234 of 447, or 52.35%, have 0 – 4 courses taught at a per course rate.

Classify the responses to D8 in terms of the various descriptions of departments or programs [A3 1 through 5.]

20.04: A3 * D8

			Program type				Total	
			Free-standing department	Combined department	Program that borrows faculty	Humanities or social science department		
Per course rate	Under \$1000	Count	16	5	1	2	24	
		Row %	66.7%	20.8%	4.2%	8.3%	100.0%	
		Col %	4.2%	2.1%	2.3%	3.3%	3.3%	
			Table %	2.2%	.7%	.1%	.3%	3.3%
	Between \$1000 & \$1999	Count	125	111	12	36	284	
		Row %	44.0%	39.1%	4.2%	12.7%	100.0%	
		Col %	33.2%	46.8%	27.3%	60.0%	39.6%	
			Table %	17.4%	15.5%	1.7%	5.0%	39.6%
	Between \$2000 & \$2999	Count	103	85	14	13	215	
		Row %	47.9%	39.5%	6.5%	6.0%	100.0%	
		Col %	27.3%	35.9%	31.8%	21.7%	29.9%	
			Table %	14.3%	11.8%	1.9%	1.8%	29.9%
	Between \$3000 & \$3999	Count	64	19	6	3	92	
		Row %	69.6%	20.7%	6.5%	3.3%	100.0%	
		Col %	17.0%	8.0%	13.6%	5.0%	12.8%	
			Table %	8.9%	2.6%	.8%	.4%	12.8%
	Between \$4000 & \$4999	Count	34	11	2	3	50	
		Row %	68.0%	22.0%	4.0%	6.0%	100.0%	
		Col %	9.0%	4.6%	4.5%	5.0%	7.0%	
			Table %	4.7%	1.5%	.3%	.4%	7.0%
Between \$5000 & \$5999	Count	25	2	6	1	34		
	Row %	73.5%	5.9%	17.6%	2.9%	100.0%		
	Col %	6.6%	.8%	13.6%	1.7%	4.7%		
		Table %	3.5%	.3%	.8%	.1%	4.7%	
Over \$6000	Count	10	4	3	2	19		
	Row %	52.6%	21.1%	15.8%	10.5%	100.0%		
	Col %	2.7%	1.7%	6.8%	3.3%	2.6%		
		Table %	1.4%	.6%	.4%	.3%	2.6%	
Total	Count		377	237	44	60	718	
	Row %		52.5%	33.0%	6.1%	8.4%	100.0%	
	Col %		100.0%	100.0%	100.0%	100.0%	100.0%	
	Table %		52.5%	33.0%	6.1%	8.4%	100.0%	

A3. Which of the following descriptions best characterizes your department or program?

(Mark (X) only one.)

- 1 Free-standing department (e.g. "Department of Religious Studies")
- 2 Combined department (e.g. "Department of Religion and Philosophy")
- 3 Program that "borrows" faculty from a number of departments
- 4 Humanities or social science department or division
- 5 Research center

D8. What is the pay per course for part-time faculty?

\$_____ Write in Amount

Classify the number of part-time men faculty in 1999-2000 [D1 f] by the affiliation categories in A1 1 through A1 6.

22.00: D1f * A1

			Institution Type						Total
			Public	Private, non-sectarian	Catholic	Jewish	Protestant	Other religion	
Male PT positions 99-00	0	Count	67	66	19	1	85	4	242
		Row %	27.7%	27.3%	7.9%	.4%	35.1%	1.7%	100.0%
		Table %	7.8%	7.6%	2.2%	.1%	9.8%	.5%	28.0%
	1	Count	49	54	24		59	1	187
		Row %	26.2%	28.9%	12.8%		31.6%	.5%	100.0%
		Table %	5.7%	6.3%	2.8%		6.8%	.1%	21.7%
	2	Count	34	22	33	2	48	3	142
		Row %	23.9%	15.5%	23.2%	1.4%	33.8%	2.1%	100.0%
		Table %	3.9%	2.5%	3.8%	.2%	5.6%	.3%	16.5%
	3	Count	14	11	20		36	1	82
		Row %	17.1%	13.4%	24.4%		43.9%	1.2%	100.0%
		Table %	1.6%	1.3%	2.3%		4.2%	.1%	9.5%
	4	Count	14	7	21		34		76
		Row %	18.4%	9.2%	27.6%		44.7%		100.0%
		Table %	1.6%	.8%	2.4%		3.9%		8.8%
	5	Count	5	5	15		12		37
		Row %	13.5%	13.5%	40.5%		32.4%		100.0%
		Table %	.6%	.6%	1.7%		1.4%		4.3%
	6	Count	8	4	1		10		23
		Row %	34.8%	17.4%	4.3%		43.5%		100.0%
		Table %	.9%	.5%	.1%		1.2%		2.7%
	7	Count	8	3	2		7		20
		Row %	40.0%	15.0%	10.0%		35.0%		100.0%
		Table %	.9%	.3%	.2%		.8%		2.3%
	8	Count	2	2	3		4		11
		Row %	18.2%	18.2%	27.3%		36.4%		100.0%
		Table %	.2%	.2%	.3%		.5%		1.3%
	9	Count	5	1	2		5		13
		Row %	38.5%	7.7%	15.4%		38.5%		100.0%
		Table %	.6%	.1%	.2%		.6%		1.5%
	10 & above	Count	3	3	10		12	2	30
		Row %	10.0%	10.0%	33.3%		40.0%	6.7%	100.0%
		Table %	.3%	.3%	1.2%		1.4%	.2%	3.5%
Total		Count	209	178	150	3	312	11	863
		Row %	24.2%	20.6%	17.4%	.3%	36.2%	1.3%	100.0%
		Table %	24.2%	20.6%	17.4%	.3%	36.2%	1.3%	100.0%

A1. Which of the following descriptions best characterizes your institution?

(Mark (X) only one.)

- 1 Public
- 2 Private, non-sectarian
- 3 Catholic
- 4 Jewish
- 5 Protestant
- 6 Other religion

D1-D2. In the 1999-2000 academic year, how many positions (i.e. salary lines) did your department or program support?

Part-time positions (Include lecturers, adjuncts, etc. Do not include your institution's graduate students or any persons counted on lines a to e.)

f. _____ f. _____

Classify the number of part-time women faculty in 1999-2000 [D2 f] by the affiliation categories in A1 1 through A1 6.

23.00: D2f * A1

			Institution Type						Group Total
			Public	Private, non-sectarian	Catholic	Jewish	Protestant	Other religion	
Female PT positions 99-00	0	Count	111	101	43	2	190	7	454
		Row %	24.4%	22.2%	9.5%	.4%	41.9%	1.5%	100.0%
		Table %	12.7%	11.6%	4.9%	.2%	21.7%	.8%	51.9%
1	Count	54	50	35	1	69	1	210	
		Row %	25.7%	23.8%	16.7%	.5%	32.9%	.5%	100.0%
		Table %	6.2%	5.7%	4.0%	.1%	7.9%	.1%	24.0%
2	Count	19	16	31		30	1	97	
		Row %	19.6%	16.5%	32.0%		30.9%	1.0%	100.0%
		Table %	2.2%	1.8%	3.5%		3.4%	.1%	11.1%
3	Count	13	5	13		7	1	39	
		Row %	33.3%	12.8%	33.3%		17.9%	2.6%	100.0%
		Table %	1.5%	.6%	1.5%		.8%	.1%	4.5%
4	Count	10	3	14		7		34	
		Row %	29.4%	8.8%	41.2%		20.6%		100.0%
		Table %	1.1%	.3%	1.6%		.8%		3.9%
5	Count	4	3	5		4		16	
		Row %	25.0%	18.8%	31.3%		25.0%		100.0%
		Table %	.5%	.3%	.6%		.5%		1.8%
6	Count	1	1	4		3	1	10	
		Row %	10.0%	10.0%	40.0%		30.0%	10.0%	100.0%
		Table %	.1%	.1%	.5%		.3%	.1%	1.1%
7	Count	1		1		2		4	
		Row %	25.0%		25.0%		50.0%		100.0%
		Table %	.1%		.1%		.2%		.5%
8	Count			1		1		2	
		Row %			50.0%		50.0%		100.0%
		Table %			.1%		.1%		.2%
9	Count					1		1	
		Row %					100.0%		100.0%
		Table %					.1%		.1%
10 & above	Count	3		4				7	
		Row %	42.9%		57.1%				100.0%
		Table %	.3%		.5%				.8%
Group Total	Count	216	179	151	3	314	11	874	
		Row %	24.7%	20.5%	17.3%	.3%	35.9%	1.3%	100.0%
		Table %	24.7%	20.5%	17.3%	.3%	35.9%	1.3%	100.0%

A1. Which of the following descriptions best characterizes your institution?

(Mark (X) only one.)

- 1 Public
- 2 Private, non-sectarian
- 3 Catholic
- 4 Jewish
- 5 Protestant
- 6 Other religion

D1-D2. In the 1999-2000 academic year, how many positions (i.e. salary lines) did your department or program support?

Part-time positions (Include lecturers, adjuncts, etc. Do not include your institution's graduate students or any persons counted on lines a to e.)

f. _____ f. _____

What is the total number of undergraduate religion majors in 1999-2000 [C7 a]? [The sum of the numbers]
What is the total number of undergraduate religion majors in 1996-97 [C7 b]? [The sum of the numbers]

24.00 & 25.00: Totals of C7a & C7b

		Majors 99-00	Majors 96-97
N	Valid	761	726
	Missing	136	171
Mean		40.99	34.20
Median		17.00	13.00
Sum		31194	24827

C7. How many undergraduates majored in religion in the 1999-2000 and 1996-1997 academic years?

(Write in the numbers. Count all undergraduates at the junior and senior levels who were declared majors in your department or program at the end of the fall term in the 1999-2000 and 1996-1997 academic years.)

a. _____ Undergraduates majoring in religion,
1999-2000

b. _____ Undergraduates majoring in religion,
1996-1997

Based on a universe of 1131 departments, with 897 responding, can you mathematically estimate the number of religion majors in 1999-2000? And in 1996-97?

26.01: C7a estimation of population

			Statistic	Std. Error
Majors 99-00	Mean		40.99	2.53
	95% Confidence	Lower Bound	36.02	
	Interval for Mean	Upper Bound	45.96	
	5% Trimmed Mean		29.97	
	Median		17.00	
	Minimum		0	
	Maximum		635	
	Interquartile Range		36.00	
	Skewness		4.121	.089

Majors 99-00

Total population = 1131 * Mean of Majors 99-00 = 40.99 = 46359.69

Total population = 1131 * Upper Bound of Majors 99-00 = 45.96 = 51980.76

Total population = 1131 * Lower Bound of Majors 99-00 = 36.02 = 40738.62

26.02: C6a estimation of population

			Statistic	Std. Error
Majors 96-97	Mean		34.20	2.27
	95% Confidence	Lower Bound	29.75	
	Interval for Mean	Upper Bound	38.65	
	5% Trimmed Mean		24.23	
	Median		13.00	
	Minimum		0	
	Maximum		590	
	Interquartile Range		29.00	
	Skewness		4.269	.091

Majors 96-97

Total population = 1131 * Mean of Majors 96-97 = 34.20 = 38680.2

Total population = 1131 * Upper Bound of Majors 96-97 = 38.65 = 43713.15

Total population = 1131 * Lower Bound of Majors 96-97 = 29.75 = 33647.25

C7. How many undergraduates majored in religion in the 1999-2000 and 1996-1997 academic years?

(Write in the numbers. Count all undergraduates at the junior and senior levels who were declared majors in your department or program at the end of the fall term in the 1999-2000 and 1996-1997 academic years.)

a. _____ Undergraduates majoring in religion, 1999-2000

b. _____ Undergraduates majoring in religion, 1996-1997

What is the total number of undergraduate religion courses offered in 1999-2000 [C1 a]? [The sum of the numbers]
 What is the total number of undergraduate religion courses offered in 1996-1997 [C1 b]? [The sum of the numbers]

27.00 & 28.00: Totals of C1a & C1b

		# Courses 99-00	# Courses 96-97
N	Valid	852	813
	Missing	45	84
Mean		36.30	34.81
Median		25.00	24.00
Sum		30924	28302

C1. How many undergraduate courses did your department or program offer in the 1999-2000 and 1996-1997 academic years? (Write in the numbers. Count multiple sections of the same course separately. The total number of courses reported at C1a should equal the sum of the courses listed at B2.)

- a.** _____
 Number of undergraduate courses offered in 1999-2000
- b.** _____
 Number of undergraduate courses offered in 1996-1997

Based on a universe of 1131 departments, with 897 responding, can you mathematically estimate the number of religion courses offered in 1999-2000? And in 1996-97?

29.01: C1a estimation of population

		Statistic	Std. Error
# Courses 99-00	Mean	36.30	1.20
	95% Confidence Interval for Mean	Lower Bound 33.95	
		Upper Bound 38.65	
	5% Trimmed Mean	31.84	
	Median	25.00	
	Minimum	0	
	Maximum	249	
	Interquartile Range	30.00	
	Skewness	2.439	.084

Number of Courses 99-00

Total population = 1131 * Mean of Courses 99-00 = 36.30 = 41055.3

Total population = 1131 * Upper Bound of Courses 99-00 = 38.65 = 43713.15

Total population = 1131 * Lower Bound of Courses 99-00 = 33.95 = 38397.45

29.02: C2a estimation of population

		Statistic	Std. Error
# Courses 96-97	Mean	34.81	1.41
	95% Confidence Interval for Mean	Lower Bound 32.04	
		Upper Bound 37.59	
	5% Trimmed Mean	29.49	
	Median	24.00	
	Minimum	0	
	Maximum	600	
	Interquartile Range	29.00	
	Skewness	5.230	.086

Number of Courses 96-97

Total population = 1131 * Mean of Courses 96-97 = 34.81 = 39370.11

Total population = 1131 * Upper Bound of Courses 96-97 = 37.59 = 42514.29

Total population = 1131 * Lower Bound of Courses 96-97 = 32.04 = 36237.24

C1. How many undergraduate courses did your department or program offer in the 1999-2000 and 1996-1997 academic years? (Write in the numbers. Count multiple sections of the same course separately. The total number of courses reported at C1a should equal the sum of the courses listed at B2.)

a. _____

Number of undergraduate courses offered in 1999-2000

b. _____

Number of undergraduate courses offered in 1996-1997

What is the total number of undergraduate religion courses offered in 1999-2000 [C1 a]? [The sum of the numbers]

What is the total number of responses in each of the responses regarding descriptions that best characterize departments or programs [A3 1 through A3 5]?

30.00: Distribution of A3

		Frequency	Percent	Valid Percent	Cumulative Percent
Valid	Free-standing department	447	49.8	50.5	50.5
	Combined department	284	31.7	32.1	82.6
	Program that borrows faculty	73	8.1	8.2	90.8
	Humanities or social science department	80	8.9	9.0	99.9
	Research center	1	.1	.1	100.0
	Total	885	98.7	100.0	
Missing	System	12	1.3		
Total		897	100.0		

A3. Which of the following descriptions best characterizes your department or program?

(Mark (X) only one.)

- 1 Free-standing department (e.g. "Department of Religious Studies")
- 2 Combined department (e.g. "Department of Religion and Philosophy")
- 3 Program that "borrows" faculty from a number of departments
- 4 Humanities or social science department or division
- 5 Research center

What is the total number of responses regarding which departments or programs offer an undergraduate major in religion [A6 1]? [The sum of the numbers]

What is the total number of responses regarding the number of departments or programs that offer an undergraduate minor in religion [A7 1]? [The sum of the numbers]

31.00 & 32.00: Sums for A6 & A7

		Program offers major	Program offers minor
N	Valid	897	890
	Sum	782	740

A6. Does your department or program offer an undergraduate major in religion?

1 Yes

2 No

A7. Does your department or program offer an undergraduate minor in religion?

1 Yes

2 No

What is the total number of responses in each category regarding undergraduate courses offered in 1999-2000 [B2 a through B2 dd]?

33.00: Totals for courses taught (b2a-b2dd)	Number of Institutions	Total Courses	% Total Courses
Intro to Bible*	541	3451	11.0%
Christian - New Testament*	693	3292	10.5%
Christian - Theological*	525	2958	9.4%
Intro to Religion	423	2727	8.7%
Christian - Old Testament*	653	2627	8.4%
Intro to World Religions	539	1720	5.5%
Christian - Historical*	579	1689	5.4%
Other	217	1391	4.4%
Christian - Ethics*	427	1304	4.1%
Ethics	360	1060	3.4%
Intro to Western Religions	244	1037	3.3%
Judaism	308	973	3.1%
Intro to Eastern Religions	276	762	2.4%
Comparative	359	760	2.4%
Arts, Literature and Religion	239	740	2.4%
American Religion	328	608	1.9%
Christian - Cultural*	234	541	1.7%
Philosophy of Religion	369	503	1.6%
Intro to Sacred Texts	148	412	1.3%
Buddhism	244	398	1.3%
Islam	244	397	1.3%
Women's Studies	235	366	1.2%
Gender & Sexuality	220	331	1.1%
Hinduism/Jainism/Sikhism	199	264	0.8%
Social Scientific Study	176	259	0.8%
Racial and Ethnic Studies	144	222	0.7%
Confucianism/Taoism	136	185	0.6%
Indigenous Religions	117	170	0.5%
Ritual and Performance	105	160	0.5%
NRMs	126	115	0.4%
Total		31422	100.0%

* - Christianity focused courses

B1. Mark (X) each area in which your department or program offered undergraduate courses in the 1999-2000 academic year. (Then answer B2 through B4 for each area you marked.)

Christianity focus vs. Non-Christianity focus courses	Total Courses	% Total Courses
Christian	15862	50.5%
Non-Christian	15560	49.5%
Total	31422	100.0%

What is the total number of responses in each category regarding the courses required for a major in a department or program [B3 a 1 through B3 dd 1]?
(In each case ignore the number 2 [No] responses)

34.00: B3	Course is required for major	% of Responding Institutions
Christian - New Testament	467	52.1%
Christian - Old Testament	452	50.4%
Christian - Theological	368	41.0%
Intro to Bible	361	40.2%
Christian - Historical	356	39.7%
Intro to World Religions	290	32.3%
Intro to Religion	272	30.3%
Christian - Ethics	259	28.9%
Ethics	178	19.8%
Philosophy of Religion	156	17.4%
Comparative	146	16.3%
Intro to Western Religions	121	13.5%
Intro to Eastern Religions	115	12.8%
American Religion	99	11.0%
Christian - Cultural	95	10.6%
Other	94	10.5%
Judaism	85	9.5%
Intro to Sacred Texts	69	7.7%
Arts, Literature and Religion	66	7.4%
Buddhism	64	7.1%
Islam	55	6.1%
Social Scientific Study	53	5.9%
Hinduism/Jainism/Sikhism	50	5.6%
Women's Studies	48	5.4%
Gender & Sexuality	45	5.0%
Ritual and Performance	40	4.5%
Racial and Ethnic Studies	32	3.6%
NRMs	27	3.0%
Confucianism/Taoism	26	2.9%
Indigenous Religions	23	2.6%

* - 897 institutions

B3. Are any of these courses required for a major in your department or program?

Rank the undergraduate courses offered in 1999-2000 (listed in B1a through dd) according to the number of times each course was checked.

35.00: Rank of B1a-B1dd	# of Institutions teaching course	% of Responding Institutions*
Christian - New Testament	750	83.6%
Christian - Old Testament	704	78.5%
Christian - Historical	638	71.1%
Intro to Bible	619	69.0%
Intro to World Religions	613	68.3%
Christian - Theological	582	64.9%
Intro to Religion	500	55.7%
Christian - Ethics	481	53.6%
Philosophy of Religion	418	46.6%
Ethics	417	46.5%
Comparative	414	46.2%
American Religion	380	42.4%
Judaism	362	40.4%
Intro to Eastern Religions	352	39.2%
Intro to Western Religions	322	35.9%
Other	304	33.9%
Women's Studies	294	32.8%
Buddhism	291	32.4%
Islam	290	32.3%
Christian - Cultural	287	32.0%
Arts, Literature and Religion	278	31.0%
Gender & Sexuality	263	29.3%
Hinduism/Jainism/Sikhism	245	27.3%
Intro to Sacred Texts	241	26.9%
Social Scientific Study	210	23.4%
Racial and Ethnic Studies	186	20.7%
Confucianism/Taoism	183	20.4%
Indigenous Religions	166	18.5%
NRMs	164	18.3%
Ritual and Performance	146	16.3%

* - 897 institutions

B1. Mark (X) each area in which your department or program offered undergraduate courses in the 1999-2000 academic year. (Then answer B2 through B4 for each area you marked.)

Rank the undergraduate courses offered in 1999-2000 (listed in B1a through dd) according to the number of times each course was checked

**35.01: Rank of B1a-B1dd
by Institution Type***

Courses offered	Private, non-		Other			Total	
	Public	sectarian	Catholic	Jewish	Protestant religion		
Christian - New Testament	157	138	144		300	11	750
Christian - Old Testament	139	121	135		299	10	704
Christian - Historical	125	120	119		264	10	638
Intro to Bible	136	114	111	2	248	8	619
Intro to World Religions	164	108	111		221	9	613
Christian - Theological	74	93	136		269	10	582
Intro to Religion	143	96	117		138	6	500
Christian - Ethics	54	69	133		218	7	481
Philosophy of Religion	113	90	54	2	156	3	418
Ethics	98	92	78	2	142	5	417
Comparative	109	93	69		139	4	414
American Religion	100	92	65	1	116	6	380
Judaism	127	101	66	3	64	1	362
Intro to Eastern Religions	124	84	57		84	3	352
Intro to Western Religions	111	73	52		83	3	322
Other	86	69	49	1	96	3	304
Women's Studies	88	72	61	1	70	2	294
Buddhism	109	89	42		50	1	291
Islam	100	88	44		54	4	290
Christian - Cultural	67	63	53		99	5	287
Arts, Literature and Religion	69	66	52	1	87	3	278
Gender & Sexuality	93	63	49	1	54	3	263
Hinduism/Jainism/Sikhism	96	67	39		42	1	245
Intro to Sacred Texts	72	51	49	2	64	3	241
Social Scientific Study	67	48	37		57	1	210
Racial and Ethnic Studies	50	37	40		55	4	186
Confucianism/Taoism	72	48	30		32	1	183
Indigenous Religions	69	30	32		34	1	166
NRMs	55	32	29		47	1	164
Ritual and Performance	45	30	41	1	27	2	146

***Sorted by Total Column**

What is the total department enrollment in 1999-2000 as indicated by the responses to C2a [the sum of the numbers]?
 What is the total department enrollment in 1996-1997 as indicated by responses to C2b [the sum of the numbers]?

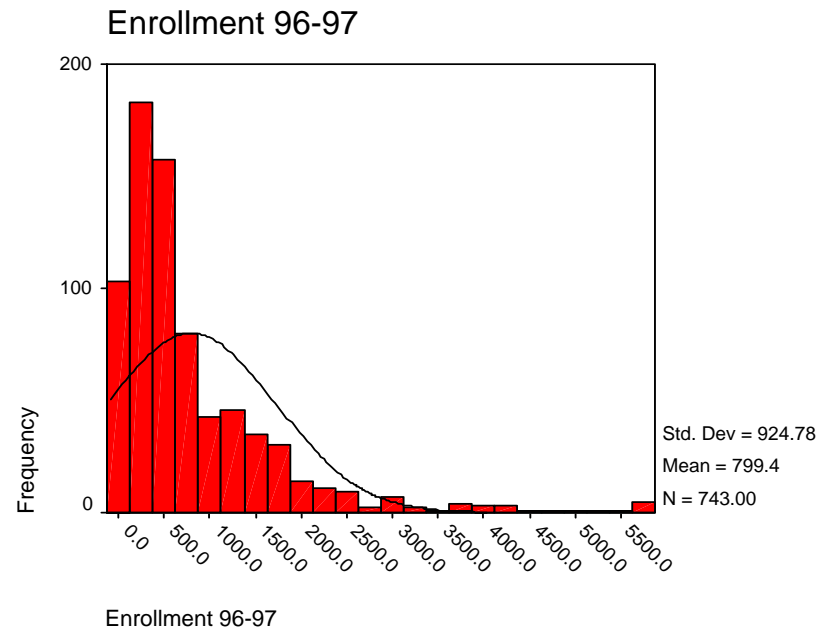
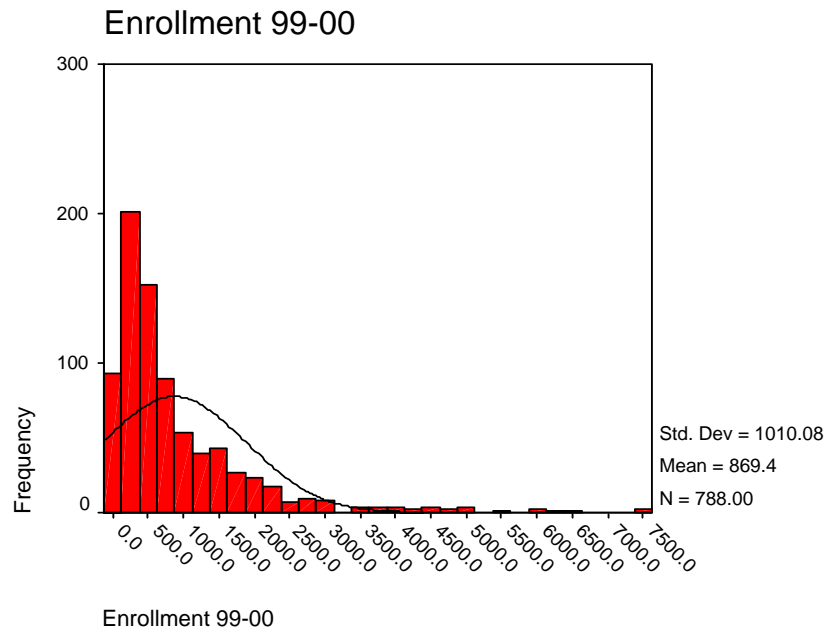
36.00 & 37.00: Totals of C2a & C2b

		Enrollment 99-00	Enrollment 96-97
N	Valid	788	743
	Missing	109	154
Mean		869.40	799.42
Median		503.00	464.00
Skewness		2.743	2.618
Sum		685086	593969

C2. What was the total enrollment in your department's or program's undergraduate courses in the 1999-2000 and 1996-1997 academic years? (Please provide total enrollment of all sections of all courses. If none, enter "0".)

a. _____
 Total enrollment in undergraduate courses in 1999-2000

b. _____
 Total enrollment in undergraduate courses in 1996-1997



What is the mean and median response to the types of undergraduate courses offered [B2 a through B2 dd]?

38.00: Means & Medians for B2a - B2dd

	Mean	Median
Intro to Religion	6.45	2.00
Intro to World Religions	3.19	1.00
Intro to Bible	6.38	2.00
Intro to Sacred Texts	2.78	1.00
Intro to Eastern Religions	2.76	1.00
Intro to Western Religions	4.25	1.00
Christian - Old Testament	4.02	2.00
Christian - New Testament	4.75	2.00
Christian - Historical	2.92	2.00
Christian - Theological	5.63	3.00
Christian - Ethics	3.05	2.00
Christian - Cultural	2.31	2.00
Buddhism	1.63	1.00
Confucianism/Taoism	1.36	1.00
Hinduism/Jainism/Sikhism	1.33	1.00
Indigenous Religions	1.45	1.00
Islam	1.63	1.00
Judaism	3.16	2.00
Comparative	2.12	1.00
American Religion	1.85	1.00
Arts, Literature and Religion	3.10	1.00
Ethics	2.94	1.00
Gender & Sexuality	1.50	1.00
NRMs	.91	1.00
Philosophy of Religion	1.36	1.00
Racial and Ethnic Studies	1.54	1.00
Ritual and Performance	1.52	1.00
Social Scientific Study	1.47	1.00
Women's Studies	1.56	1.00
Other	6.41	2.00

B2. How many undergraduate courses were offered in this area in the 1999-2000 academic year? (Write in the number. Please count multiple sections of the same course separately. Each course can be counted in only one area.)

What is the mean and median response to the types of undergraduate courses offered [B2 a through B2 dd] by Institution Type [A1]?

38.01 Means and Medians for B2a - B2dd by Institution Type A1

	Institution Type											
	Public		Private, non-sectarian		Catholic		Jewish		Protestant		Other religion	
	Mean	Median	Mean	Median	Mean	Median	Mean	Median	Mean	Median	Mean	Median
Intro to Religion	4.33	2.00	5.13	2.00	9.43	5.00	.	.	7.06	2.00	4.33	2.50
Intro to World Religions	4.92	2.00	3.31	1.00	3.04	2.00	.	.	2.01	1.00	1.11	1.00
Intro to Bible	2.43	2.00	5.93	2.00	6.71	3.50	3.50	3.50	8.25	4.00	8.17	8.00
Intro to Sacred Texts	2.20	1.00	2.79	1.00	2.27	2.00	4.00	4.00	3.71	2.00	.00	.00
Intro to Eastern Religions	2.61	2.00	4.79	1.00	1.68	1.00	.	.	1.48	1.00	1.00	1.00
Intro to Western Religions	2.95	2.00	5.12	1.00	3.62	1.00	.	.	5.77	1.00	1.50	1.50
Christian - Old Testament	2.09	1.00	2.99	1.00	2.44	2.00	.	.	5.91	3.00	5.89	5.00
Christian - New Testament	2.39	2.00	3.35	1.00	3.50	2.00	.	.	7.01	4.00	7.60	6.00
Christian - Historical	2.19	2.00	2.14	2.00	3.42	2.00	.	.	3.33	2.00	4.67	4.00
Christian - Theological	2.38	1.00	3.02	2.00	9.38	6.00	.	.	5.37	3.00	5.89	4.00
Christian - Ethics	1.54	1.00	2.00	1.00	5.01	3.00	.	.	2.52	1.00	1.50	1.50
Christian - Cultural	1.96	2.00	2.27	1.00	2.76	2.00	.	.	2.33	2.00	2.75	3.00
Buddhism	1.76	1.00	1.96	1.00	1.28	1.00	.	.	.92	1.00	.00	.00
Confucianism/Taoism	1.31	1.00	1.73	1.00	.44	.00	.	.	1.62	1.00	.00	.00
Hinduism/Jainism/Sikhism	1.37	1.00	1.39	1.00	1.56	1.00	.	.	.90	1.00	.00	.00
Indigenous Religions	1.46	1.00	1.58	1.00	1.00	.50	.	.	1.64	1.00	.00	.00
Islam	1.83	1.00	1.63	1.00	2.03	1.00	.	.	.93	1.00	1.00	1.00
Judaism	3.40	2.00	3.74	2.00	2.48	2.00	20.67	20.00	1.30	1.00	.00	.00
Comparative	2.80	1.00	2.08	1.00	1.84	1.00	.	.	1.78	1.00	.75	1.00
American Religion	2.49	1.00	1.35	1.00	1.64	1.00	10.00	10.00	1.78	1.00	1.00	1.00
Arts, Literature and Religion	1.95	1.00	1.63	1.00	2.85	2.00	200.00	200.00	2.76	1.00	.50	.50
Ethics	3.80	2.00	2.47	1.00	3.68	2.00	3.00	3.00	2.36	1.00	.75	1.00
Gender & Sexuality	1.30	1.00	1.38	1.00	2.26	1.00	10.00	10.00	1.19	1.00	1.00	1.00
NRMs	1.05	1.00	.68	1.00	.81	1.00	.	.	1.00	1.00	.00	.00
Philosophy of Religion	1.46	1.00	1.26	1.00	1.24	1.00	4.50	4.50	1.35	1.00	1.00	1.00
Racial and Ethnic Studies	1.67	1.00	1.56	1.00	1.96	1.00	.	.	1.18	1.00	1.50	2.00
Ritual and Performance	1.57	1.00	1.31	1.00	1.61	1.00	6.00	6.00	1.50	1.00	.50	.50
Social Scientific Study	2.00	1.00	1.30	1.00	1.11	1.00	.	.	1.23	1.00	.00	.00
Women's Studies	1.78	1.00	1.36	1.00	1.69	1.00	5.00	5.00	1.38	1.00	.50	.50
Other	5.00	2.00	3.18	2.00	2.63	1.50	300.00	300.00	7.36	3.00	.50	.50

- What is the mean and median response to the total department enrollment in 1999-2000 [C2 a]?
 What is the mean and median response to the total department enrollment in 1996-1997 [C2 b]?
 What is the mean and median response to the total number of courses that an undergraduate major in religion must complete [C4]?
 What is the mean and median response to how many undergraduates majored in religion in 1999-2000 [C7 a]?
 What is the mean and median response to how many undergraduates majored in religion in 1996-1997 [C7 b]?

39.00-43.00: Means & medians for C2a, C2b, C4, C7a, C7b

		Enrollment 96-97	Enrollment 99-00	Total number of courses major completes	Majors 99-00	Majors 96-97
N	Valid	743	788	762	761	726
	Missing	154	109	135	136	171
Mean		799.42	869.40	16.84	40.99	34.20
Median		464.00	503.00	11.00	17.00	13.00

39.00-43.00: Means & medians for C2a, C2b, C4, C7a, C7b

		Enrollment 96-97	Enrollment 99-00	Number of courses required for major ^a	Majors 99-00	Majors 96-97
N	Valid	743	788	573	761	726
	Missing	154	109	324	136	171
Mean		799.42	869.40	10.83	40.99	34.20
Median		464.00	503.00	10.00	17.00	13.00

a. Valid responses limited to 6-16 courses required for major

C2. What was the total enrollment in your department's or program's undergraduate courses in the 1999-2000 and 1996-1997 academic years? a. _____

Total enrollment in undergraduate courses in 1999-2000

b. _____

Total enrollment in undergraduate courses in 1996-1997

C4. What is the total number of courses that an undergraduate major in religion must complete?

_____ Write in Number

C7. How many undergraduates majored in religion in the 1999-2000 and 1996-1997 academic years?

(Write in the numbers. Count all undergraduates at the junior and senior levels who were declared majors in your department or program at the end of the fall term in the 1999-2000 and 1996-1997 academic years.)

a. _____ Undergraduates majoring in religion, 1999-2000

b. _____ Undergraduates majoring in religion, 1996-1997

What is the mean and median response regarding the number of undergraduate majors who received a bachelor's degree from an institution in each of four categories [C8 a and C8 b and C8 c and C8 d]?

44.00: Means & medians for C8 (undergrad majors)

		Male 99-00	Female 99-00	Male 96-97	Female 96-97
N	Valid	832	828	706	709
	Missing	65	69	191	188
Mean		7.02	5.83	6.76	5.42
Median		2.00	2.00	2.00	2.00

C8. How many undergraduate majors in your department or program received a bachelor's degree from your institution in the 1999-2000 and 1996-1997 academic years? (Write in the number. If none, enter "0".)

Majors receiving bachelor's degrees in 1999-2000:

- a. _____ Number of men
- b. _____ Number of women

Majors receiving bachelor's degrees in 1996-1997:

- c. _____ Number of men
- d. _____ Number of women

What is the total number of institutions that require that students take courses in religion in order to graduate [A4 1]?

45.00: Requires students take religion to graduate

		Frequency	Percent	Valid Percent
Valid	Yes	496	55.3	56.4
	No	384	42.8	43.6
	Total	880	98.1	100.0
Missing	Institutions	17	1.9	
Total		897	100.0	

45.01 Requires students take religion to graduate * Institution Type Crosstabulation

			Institution Type					Total
			Public	Private, non-sectarian	Catholic	Jewish	Protestant	
Requires students take religion to graduate	Yes	Count	9	51	140	3	281	496
		%	4.1%	28.3%	94.0%	100.0%	88.1%	56.4%
	No	Count	208	129	9		38	384
		%	95.9%	71.7%	6.0%		11.9%	43.6%
Total		Count	217	180	149	3	319	880

Note: The discrepancy between the two tables with regard to total percentage of institutions answering yes or no to whether students are required to take a religion course to graduate

A4. Does your institution . . .

Yes No

1 __ 2 __ a. Require that students take courses in religion in order to graduate?

What is the total number of adjuncts in 1996-1997 [the sum of D12f and D13f]?

What is the total number of adjuncts in 1999-2000 [the sum of D1f and D2f]?

**46.00 & 47.00: Sums of male & female adjunct
faculties (D12f + D13f & D1f + D2f)**

	96-97 Total Adjunct Faculty	99-00 Total Adjunct Faculty
N Valid	825	881
Missing	72	16
Sum	2640	3494

D1-D2. In the 1999-2000 academic year, how many positions (i.e. salary lines) did your department or program support?

Part-time positions (Include lecturers, adjuncts, etc. Do not include your institution's graduate students or any persons counted on lines a to e.)

f. _____ f. _____

D12-D13. In the 1996-1997 academic year, how many positions (i.e. salary lines) did your department or program support? (Write in numbers. If none, enter "0".)

Part-time positions (Include lecturers, adjuncts, etc. Do not include your institution's graduate students or any persons counted on lines a to e.)

f. _____ f. _____

Classify the number of part-time men adjuncts in 1996-97 [D12f] by the affiliation categories in A1 1 through A 1 6.

48.00: A1 * D12f

		Institution Type						Group Total
		Public	Private, non-sectarian	Catholic	Jewish	Protestant	Other religion	
Male PT positions	Sum	422	233	431	7	757	26	1876
96-97	Row Sum %	22.5%	12.4%	23.0%	.4%	40.4%	1.4%	100.0%

A1. Which of the following descriptions best characterizes your institution?

(Mark (X) only one.)

- 1 Public
- 2 Private, non-sectarian
- 3 Catholic
- 4 Jewish
- 5 Protestant
- 6 Other religion

D12-D13. In the 1996-1997 academic year, how many positions (i.e. salary lines) did your department or program support? (Write in numbers. If none, enter "0".)

Part-time positions (Include lecturers, adjuncts, etc. Do not include your institution's graduate students or any persons counted on lines a to e.)

f. _____ f. _____

Classify the number of part-time men adjuncts in 1996-97 [D12f] by the affiliation categories in A1 1 through A 1 6.

48.00: A1 * D12f detail

			Institution Type					Total	
			Public	Private, non-sectarian	Catholic	Jewish	Protestant		Other religion
Male PT positions 96-97	0	Count	65	71	41		96	4	277
		Row %	23.5%	25.6%	14.8%		34.7%	1.4%	100.0%
	1	Count	53	45	22	2	56	1	179
		Row %	29.6%	25.1%	12.3%	1.1%	31.3%	.6%	100.0%
	2	Count	26	21	22		43	3	115
		Row %	22.6%	18.3%	19.1%		37.4%	2.6%	100.0%
	3	Count	15	12	18		35	1	81
		Row %	18.5%	14.8%	22.2%		43.2%	1.2%	100.0%
	4	Count	9	5	14		28		56
		Row %	16.1%	8.9%	25.0%		50.0%		100.0%
	5	Count	12	3	7	1	14		37
		Row %	32.4%	8.1%	18.9%	2.7%	37.8%		100.0%
	6	Count	5	2	2		4		13
		Row %	38.5%	15.4%	15.4%		30.8%		100.0%
	7	Count	3	2	3		6		14
		Row %	21.4%	14.3%	21.4%		42.9%		100.0%
	8	Count	4	2	2		5		13
		Row %	30.8%	15.4%	15.4%		38.5%		100.0%
	9	Count	2		1		4		7
		Row %	28.6%		14.3%		57.1%		100.0%
	10	Count	3	1	2		3		9
		Row %	33.3%	11.1%	22.2%		33.3%		100.0%
	11	Count		1	1		3		5
		Row %		20.0%	20.0%		60.0%		100.0%
	12	Count	1	1	2		3		7
		Row %	14.3%	14.3%	28.6%		42.9%		100.0%
	13	Count	1		1				2
		Row %	50.0%		50.0%				100.0%
	14	Count			2		1		3
		Row %			66.7%		33.3%		100.0%
	15	Count					1		1
		Row %					100.0%		100.0%
	16	Count						1	1
		Row %						100.0%	100.0%
	18	Count					1		1
		Row %					100.0%		100.0%
	20	Count	1				2		3
		Row %	33.3%				66.7%		100.0%
	66	Count			1				1
		Row %			100.0%				100.0%
Total	Count		200	166	141	3	305	10	825
	Row %		24.2%	20.1%	17.1%	.4%	37.0%	1.2%	100.0%

The questions being referenced on page 79, are the same as the questions on page 78.

Classify the number of part-time women adjuncts in 1996-97[D13f] by the affiliation categories in A1 1 through A 1 6.

48.00: A1

			Institution					Total	
			Publi	Private non-	Catholi	Jewish	Protestan		Other
Femal PT position 96-97	0	Coun	114	113	57	1	205	6	496
		Row %	23.0%	22.8%	11.5%	.2%	41.3%	1.2%	100.0
	1	Coun	45	30	29	1	52	1	158
		Row %	28.5%	19.0%	18.4%	.6%	32.9%	.6%	100.0
	2	Coun	20	14	16	1	26	1	78
		Row %	25.6%	17.9%	20.5%	1.3%	33.3%	1.3%	100.0
	3	Coun	6	5	18		9	1	39
		Row %	15.4%	12.8%	46.2%		23.1%	2.6%	100.0
	4	Coun	6	2	8		7		23
		Row %	26.1%	8.7%	34.8%		30.4%		100.0
	5	Coun	5	1	4		3		13
		Row %	38.5%	7.7%	30.8%		23.1%		100.0
	6	Coun	3		3		1		7
		Row %	42.9%		42.9%		14.3%		100.0
	7	Coun	1		2				3
		Row %	33.3%		66.7%				100.0
	8	Coun			1		1	1	3
		Row %			33.3%		33.3%	33.3%	100.0
	9	Coun			1		1		2
		Row %			50.0%		50.0%		100.0
10	Coun		1					1	
	Row %		100.0					100.0	
14	Coun					1		1	
	Row %					100.0		100.0	
15	Coun			1				1	
	Row %			100.0				100.0	
33	Coun			1				1	
	Row %			100.0				100.0	
Total	Coun		200	166	141	3	306	10	826
	Row %		24.2%	20.1%	17.1%	.4%	37.0%	1.2%	100.0

The questions being referenced above, are the same as the questions on page 78.

Classify the number of part-time women adjuncts in 1996-97[D13f] by the affiliation categories in A1 1 through A 1 6.

49.00: A1 * D13f

		Institution Type						Group Total
		Public	Private, non-sectarian	Catholic	Jewish	Protestant	Other religion	
Female PT positions	Sum	177	96	264	3	211	14	765
96-97	Row Sum %	23.1%	12.5%	34.5%	.4%	27.6%	1.8%	100.0%

A1. Which of the following descriptions best characterizes your institution?

(Mark (X) only one.)

- 1 Public
- 2 Private, non-sectarian
- 3 Catholic
- 4 Jewish
- 5 Protestant
- 6 Other religion

D12-D13. In the 1996-1997 academic year, how many positions (i.e. salary lines) did your department or program support? (Write in numbers. If none, enter "0".)

Part-time positions (Include lecturers, adjuncts, etc. Do not include your institution's graduate students or any persons counted on lines a to e.)

f. _____ f. _____

“Missing Data” Information

% of Responding Institutions not responding to 99-00 vs. 96-97 data

# Courses 99-00	# Courses 96-97
5	9.4
Enrollment 99-00	Enrollment 96-97
12.2	17.2
Majors 99-00	Majors 96-97
15.2	19.1
Received BA - male 99-00	Received BA - male 96-97
7.2	21.3
Received BA - female 99-00	Received BA - female 96-97
7.7	21

Supplemental Tables

99-00 Appropriation to dept * Institution Type Crosstabulation

			Institution Type					Total	
			Public	Private, non-sectarian	Catholic	Jewish	Protestant		Other religion
99-00 Appropriation to dept	Less than \$50,000	Count	53	38	37	1	83	3	215
		% within 99-00 Appropriation to dept	24.7%	17.7%	17.2%	.5%	38.6%	1.4%	100.0%
		% within Institution Type	26.2%	23.5%	26.2%	33.3%	27.7%	27.3%	26.3%
		% of Total	6.5%	4.6%	4.5%	.1%	10.1%	.4%	26.3%
	\$50,000-\$99,999	Count	28	23	20		44	3	118
		% within 99-00 Appropriation to dept	23.7%	19.5%	16.9%		37.3%	2.5%	100.0%
		% within Institution Type	13.9%	14.2%	14.2%		14.7%	27.3%	14.4%
		% of Total	3.4%	2.8%	2.4%		5.4%	.4%	14.4%
	\$100,000-\$249,999	Count	39	38	34		74	2	187
		% within 99-00 Appropriation to dept	20.9%	20.3%	18.2%		39.6%	1.1%	100.0%
		% within Institution Type	19.3%	23.5%	24.1%		24.7%	18.2%	22.8%
		% of Total	4.8%	4.6%	4.2%		9.0%	.2%	22.8%
	\$250,000-\$499,999	Count	33	29	24	1	57	3	147
		% within 99-00 Appropriation to dept	22.4%	19.7%	16.3%	.7%	38.8%	2.0%	100.0%
		% within Institution Type	16.3%	17.9%	17.0%	33.3%	19.0%	27.3%	17.9%
		% of Total	4.0%	3.5%	2.9%	.1%	7.0%	.4%	17.9%
	\$500,000-\$999,999	Count	33	24	12	1	34		104
		% within 99-00 Appropriation to dept	31.7%	23.1%	11.5%	1.0%	32.7%		100.0%
		% within Institution Type	16.3%	14.8%	8.5%	33.3%	11.3%		12.7%
		% of Total	4.0%	2.9%	1.5%	.1%	4.2%		12.7%
	\$1 million-\$2 million	Count	12	7	9		5		33
		% within 99-00 Appropriation to dept	36.4%	21.2%	27.3%		15.2%		100.0%
		% within Institution Type	5.9%	4.3%	6.4%		1.7%		4.0%
		% of Total	1.5%	.9%	1.1%		.6%		4.0%
\$2 million or more	Count	4	3	5		3		15	
	% within 99-00 Appropriation to dept	26.7%	20.0%	33.3%		20.0%		100.0%	
	% within Institution Type	2.0%	1.9%	3.5%		1.0%		1.8%	
	% of Total	.5%	.4%	.6%		.4%		1.8%	
Total	Count	202	162	141	3	300	11	819	
	% within 99-00 Appropriation to dept	24.7%	19.8%	17.2%	.4%	36.6%	1.3%	100.0%	
	% within Institution Type	100.0%	100.0%	100.0%	100.0%	100.0%	100.0%	100.0%	
	% of Total	24.7%	19.8%	17.2%	.4%	36.6%	1.3%	100.0%	

A1. Which of the following descriptions best characterizes your institution?

(Mark (X) only one.)

- 1 Public
- 2 Private, non-sectarian
- 3 Catholic
- 4 Jewish
- 5 Protestant
- 6 Other religion

E1. In the 1999-2000 academic year, how much money did your institution appropriate to pay for your department's or program's total expenditures? (Mark (X) only one.)

- 1 Less than \$50,000
- 2 \$50,000-\$99,999
- 3 \$100,000-\$249,999
- 4 \$250,000-\$499,999
- 5 \$500,000-\$999,999
- 6 \$1 million-\$2 million
- 7 \$2 million or more

99-00 Appropriation to dept * Program type Crosstabulation

			Program type					Total
			Free-standing department	Combined department	Program that borrows faculty	Humanities or social science department	Research center	
99-00 Appropriation to dept	Less than \$50,000	Count	83	73	27	29	1	213
		% within 99-00 Appropriation to dept	39.0%	34.3%	12.7%	13.6%	.5%	100.0%
		% within Program type	20.0%	27.3%	45.0%	42.0%	100.0%	26.3%
		% of Total	10.2%	9.0%	3.3%	3.6%	.1%	26.3%
	\$50,000-\$99,999	Count	45	37	15	19		116
		% within 99-00 Appropriation to dept	38.8%	31.9%	12.9%	16.4%		100.0%
		% within Program type	10.9%	13.9%	25.0%	27.5%		14.3%
		% of Total	5.5%	4.6%	1.8%	2.3%		14.3%
	\$100,000-\$249,999	Count	86	80	10	11		187
		% within 99-00 Appropriation to dept	46.0%	42.8%	5.3%	5.9%		100.0%
		% within Program type	20.8%	30.0%	16.7%	15.9%		23.1%
		% of Total	10.6%	9.9%	1.2%	1.4%		23.1%
	\$250,000-\$499,999	Count	96	42	4	4		146
		% within 99-00 Appropriation to dept	65.8%	28.8%	2.7%	2.7%		100.0%
		% within Program type	23.2%	15.7%	6.7%	5.8%		18.0%
		% of Total	11.8%	5.2%	.5%	.5%		18.0%
	\$500,000-\$999,999	Count	71	26	2	3		102
		% within 99-00 Appropriation to dept	69.6%	25.5%	2.0%	2.9%		100.0%
		% within Program type	17.1%	9.7%	3.3%	4.3%		12.6%
		% of Total	8.8%	3.2%	.2%	.4%		12.6%
	\$1 million-\$2 million	Count	20	7	2	3		32
		% within 99-00 Appropriation to dept	62.5%	21.9%	6.3%	9.4%		100.0%
		% within Program type	4.8%	2.6%	3.3%	4.3%		3.9%
		% of Total	2.5%	.9%	.2%	.4%		3.9%
	\$2 million or more	Count	13	2				15
		% within 99-00 Appropriation to dept	86.7%	13.3%				100.0%
		% within Program type	3.1%	.7%				1.8%
		% of Total	1.6%	.2%				1.8%
Total	Count	414	267	60	69	1	811	
	% within 99-00 Appropriation to dept	51.0%	32.9%	7.4%	8.5%	.1%	100.0%	
	% within Program type	100.0%	100.0%	100.0%	100.0%	100.0%	100.0%	
	% of Total	51.0%	32.9%	7.4%	8.5%	.1%	100.0%	

A3. Which of the following descriptions best characterizes your department or program?

(Mark (X) only one.)

- 1 Free-standing department (e.g. "Department of Religious Studies")
- 2 Combined department (e.g. "Department of Religion and Philosophy")
- 3 Program that "borrows" faculty from a number of departments
- 4 Humanities or social science department or division
- 5 Research center

E1. In the 1999-2000 academic year, how much money did your institution appropriate to pay for your department's or program's total expenditures? (Mark (X) only one.)

- 1 Less than \$50,000
- 2 \$50,000-\$99,999
- 3 \$100,000-\$249,999
- 4 \$250,000-\$499,999
- 5 \$500,000-\$999,999
- 6 \$1 million-\$2 million
- 7 \$2 million or more

Region * Institution Type Crosstabulation

			Institution Type					Total	
			Public	Private, non-sectarian	Catholic	Jewish	Protestant		Other religion
Region	Eastern International	Count	28	21	20		10	79	
		% of Total	3.1%	2.3%	2.2%		1.1%	8.8%	
	Mid-Atlantic	Count	16	32	28	1	15	1	93
		% of Total	1.8%	3.6%	3.1%	.1%	1.7%	.1%	10.4%
	Midwest	Count	26	28	28	1	51	3	137
		% of Total	2.9%	3.1%	3.1%	.1%	5.7%	.3%	15.3%
	New England-Maritimes	Count	15	20	17		3		55
		% of Total	1.7%	2.2%	1.9%		.3%		6.1%
	Pacific Northwest	Count	13	6	7		22		48
		% of Total	1.4%	.7%	.8%		2.5%		5.4%
	Rocky Mountains-Great Plains	Count	5	5	3		11		24
		% of Total	.6%	.6%	.3%		1.2%		2.7%
	Southeast	Count	44	31	8		105	4	192
		% of Total	4.9%	3.5%	.9%		11.7%	.4%	21.4%
	Southwest	Count	13	10	11		55		89
		% of Total	1.4%	1.1%	1.2%		6.1%		9.9%
	Upper Midwest	Count	17	14	21		37	3	92
		% of Total	1.9%	1.6%	2.3%		4.1%	.3%	10.3%
	Western	Count	25	15	10	1	14	1	66
		% of Total	2.8%	1.7%	1.1%	.1%	1.6%	.1%	7.4%
	Not assigned	Count	20	1			1		22
		% of Total	2.2%	.1%			.1%		2.5%
Total		Count	222	183	153	3	324	12	897
		% of Total	24.7%	20.4%	17.1%	.3%	36.1%	1.3%	100.0%

A1. Which of the following descriptions best characterizes your institution?

(Mark (X) only one.)

- 1 Public
- 2 Private, non-sectarian
- 3 Catholic
- 4 Jewish
- 5 Protestant
- 6 Other religion

For AAR Region definitions, see Appendix B

Region and Majors

		Majors 96-97		Majors 99-00	
		Sum	Col Sum %	Sum	Col Sum %
Region	Not assigned	119	.5%	130	.4%
	Eastern International	2030	8.2%	2102	6.7%
	Mid-Atlantic	2112	8.5%	2628	8.4%
	Midwest	4483	18.1%	5648	18.1%
	New England-Maritimes	732	2.9%	848	2.7%
	Pacific Northwest	1167	4.7%	1616	5.2%
	Rocky Mountains-Great Plains	662	2.7%	721	2.3%
	Southeast	6317	25.4%	8050	25.8%
	Southwest	3244	13.1%	4144	13.3%
	Upper Midwest	2395	9.6%	3221	10.3%
	Western	1566	6.3%	2086	6.7%
Group Total		24827	100.0%	31194	100.0%

C7. How many undergraduates majored in religion in the 1999-2000 and 1996-1997 academic years?

(Write in the numbers. Count all undergraduates at the junior and senior levels who were declared majors in your department or program at the end of the fall term in the 1999-2000 and 1996-1997 academic years.)

a. _____ Undergraduates majoring in religion, 1999-2000

b. _____ Undergraduates majoring in religion, 1996-1997

For AAR Region definitions, see Appendix B

Appropriations to Department and Salary Lines - Male

		99-00 Appropriation to dept							Table Total
		Less than \$50,000	\$50,000-\$99,999	\$100,000-\$249,999	\$250,000-\$499,999	\$500,000-\$999,999	\$1 million-\$2 million	\$2 million or more	
Male Tenured	Sum	376	127	325	469	505	254	169	2391
	Row Sum %	16.9%	5.7%	14.6%	21.1%	22.7%	11.4%	7.6%	100.0%
Male tenure track	Sum	139	34	133	162	156	69	35	781
	Row Sum %	19.1%	4.7%	18.3%	22.3%	21.4%	9.5%	4.8%	100.0%
Male long-term contract	Sum	120	42	101	64	75	36	100	581
	Row Sum %	22.3%	7.8%	18.8%	11.9%	13.9%	6.7%	18.6%	100.0%
Male terminal contract	Sum	45	15	37	48	47	59	9	279
	Row Sum %	17.3%	5.8%	14.2%	18.5%	18.1%	22.7%	3.5%	100.0%
Male joint appts	Sum	40	14	56	39	26	12	10	218
	Row Sum %	20.3%	7.1%	28.4%	19.8%	13.2%	6.1%	5.1%	100.0%
Male PT Positions 99-00	Sum	423	224	466	357	370	224	182	2443
	Row Sum %	18.8%	10.0%	20.7%	15.9%	16.5%	10.0%	8.1%	100.0%

E1. In the 1999-2000 academic year, how much money did your institution appropriate to pay for your department's or program's total expenditures? (Mark (X) only one.)

- 1 Less than \$50,000
- 2 \$50,000-\$99,999
- 3 \$100,000-\$249,999
- 4 \$250,000-\$499,999
- 5 \$500,000-\$999,999
- 6 \$1 million-\$2 million
- 7 \$2 million or more

D1-D2. In the 1999-2000 academic year, how many positions (i.e. salary lines) did your department or program support?

Full-time positions –

	Male (D1)	Female (D2)
Tenured positions	a. _____	a. _____
Tenure track positions	b. _____	b. _____
Long-term contract positions	c. _____	c. _____
Terminal contract positions	d. _____	d. _____
Joint appointments	e. _____	e. _____

Appropriations to Department and Salary Lines - Female

		99-00 Appropriation to dept							Table Total
		Less than \$50,000	\$50,000-\$99,999	\$100,000-\$249,999	\$250,000-\$499,999	\$500,000-\$999,999	\$1 million-\$2 million	\$2 million or more	
Female tenured	Sum	84	34	55	116	113	78	32	557
	Row Sum %	16.4%	6.6%	10.7%	22.7%	22.1%	15.2%	6.3%	100.0%
Female tenure track	Sum	73	17	53	74	73	30	16	361
	Row Sum %	21.7%	5.1%	15.8%	22.0%	21.7%	8.9%	4.8%	100.0%
Female long-term contract	Sum	29	9	31	23	22	17	32	181
	Row Sum %	17.8%	5.5%	19.0%	14.1%	13.5%	10.4%	19.6%	100.0%
Female terminal contract	Sum	12	4	19	19	27	19	10	114
	Row Sum %	10.9%	3.6%	17.3%	17.3%	24.5%	17.3%	9.1%	100.0%
Female joint appts	Sum	17	5	10	7	6	4	2	56
	Row Sum %	33.3%	9.8%	19.6%	13.7%	11.8%	7.8%	3.9%	100.0%
Female PT positions 99-00	Sum	191	83	180	132	207	121	65	1051
	Row Sum %	19.5%	8.5%	18.4%	13.5%	21.1%	12.4%	6.6%	100.0%

E1. In the 1999-2000 academic year, how much money did your institution appropriate to pay for your department's or program's total expenditures? (Mark (X) only one.)

- 1 Less than \$50,000
- 2 \$50,000-\$99,999
- 3 \$100,000-\$249,999
- 4 \$250,000-\$499,999
- 5 \$500,000-\$999,999
- 6 \$1 million-\$2 million
- 7 \$2 million or more

D1-D2. In the 1999-2000 academic year, how many positions (i.e. salary lines) did your department or program support?

- Full-time positions –**
- | | | |
|------------------------------|------------------|--------------------|
| | Male (D1) | Female (D2) |
| Tenured positions | a. _____ | a. _____ |
| Tenure track positions | b. _____ | b. _____ |
| Long-term contract positions | c. _____ | c. _____ |
| Terminal contract positions | d. _____ | d. _____ |
| Joint appointments | e. _____ | e. _____ |

Carnegie Class * Institution Type Crosstabulation

			Institution Type					Total
			Public	Private, non-sectarian	Catholic	Jewish	Protestant	
Carnegie Class	Research Universities I	Count	42	23	1		2	68
		% of Total	5.2%	2.8%	.1%		.2%	8.4%
	Research Universities II	Count	15	9	1			25
		% of Total	1.8%	1.1%	.1%			3.1%
	Doctoral Universities I	Count	11	5	6		3	25
		% of Total	1.4%	.6%	.7%		.4%	3.1%
	Doctoral Universities II	Count	11	5	5		3	24
		% of Total	1.4%	.6%	.6%		.4%	2.9%
	Master's (Comprehensive) Universities and Colleges I	Count	62	24	59		31	176
		% of Total	7.6%	2.9%	7.2%		3.8%	21.6%
	Master's (Comprehensive) Universities and Colleges II	Count	1	4	19		18	42
		% of Total	.1%	.5%	2.3%		2.2%	5.2%
	Baccalaureate (Liberal Arts) Colleges I	Count	2	64	5		43	115
		% of Total	.2%	7.9%	.6%		5.3%	14.1%
	Baccalaureate Colleges II	Count	5	30	46	1	141	226
		% of Total	.6%	3.7%	5.7%	.1%	17.3%	27.8%
	Associate of Arts Colleges	Count	15	2	5		14	38
		% of Total	1.8%	.2%	.6%		1.7%	4.7%
	Other institutions with degrees in religion	Count	1	12	2	1	53	73
		% of Total	.1%	1.5%	.2%	.1%	6.5%	9.0%
	Teachers colleges	Count					1	1
		% of Total					.1%	.1%
	Other specialized institutions	Count		1				1
		% of Total		.1%				.1%
Total		Count	165	179	149	2	308	814
		% of Total	20.3%	22.0%	18.3%	.2%	37.8%	100.0%

A1. Which of the following descriptions best characterizes your institution?

(Mark (X) only one.)

- 1 Public
- 2 Private, non-sectarian
- 3 Catholic
- 4 Jewish
- 5 Protestant
- 6 Other religion

For Carnegie Class Definitions, see Appendix C

Carnegie Class * 99-00 Appropriation to dept Crosstabulation

			99-00 Appropriation to dept						Total	
			Less than \$50,000	\$50,000-\$99,999	\$100,000-\$249,999	\$250,000-\$499,999	\$500,000-\$999,999	\$1 million-\$2 million		\$2 million or more
Carnegie Class	Research Universities I	Count	14	10	3	6	15	7	4	59
		% of Total	1.9%	1.3%	.4%	.8%	2.0%	.9%	.5%	8.0%
	Research Universities II	Count	6	1	8	4	3	1	1	24
		% of Total	.8%	.1%	1.1%	.5%	.4%	.1%	.1%	3.2%
	Doctoral Universities I	Count	5		4	6	4	2	2	23
		% of Total	.7%		.5%	.8%	.5%	.3%	.3%	3.1%
	Doctoral Universities II	Count	2	3	4	5	4	4	1	23
		% of Total	.3%	.4%	.5%	.7%	.5%	.5%	.1%	3.1%
	Master's (Comprehensive) Universities and Colleges I	Count	39	16	29	40	30	4	1	159
		% of Total	5.3%	2.2%	3.9%	5.4%	4.0%	.5%	.1%	21.5%
	Master's (Comprehensive) Universities and Colleges II	Count	11	4	15	10	2			42
		% of Total	1.5%	.5%	2.0%	1.3%	.3%			5.7%
	Baccalaureate (Liberal Arts) Colleges I	Count	26	13	24	23	18			104
		% of Total	3.5%	1.8%	3.2%	3.1%	2.4%			14.0%
	Baccalaureate Colleges II	Count	62	42	58	30	16	3		211
		% of Total	8.4%	5.7%	7.8%	4.0%	2.2%	.4%		28.5%
	Associate of Arts Colleges	Count	12	6	12	3				33
		% of Total	1.6%	.8%	1.6%	.4%				4.5%
Other institutions with degrees in religion	Count	18	8	16	9	4	2	4	61	
	% of Total	2.4%	1.1%	2.2%	1.2%	.5%	.3%	.5%	8.2%	
Teachers colleges	Count				1				1	
	% of Total				.1%				.1%	
Other specialized institutions	Count				1				1	
	% of Total				.1%				.1%	
Total	Count	195	103	173	138	96	23	13	741	
	% of Total	26.3%	13.9%	23.3%	18.6%	13.0%	3.1%	1.8%	100.0%	

For Carnegie Class Definitions, see Appendix C

E1. In the 1999-2000 academic year, how much money did your institution appropriate to pay for your department's or program's total expenditures? (Mark (X) only one.)

- 1 Less than \$50,000
- 2 \$50,000-\$99,999
- 3 \$100,000-\$249,999
- 4 \$250,000-\$499,999
- 5 \$500,000-\$999,999
- 6 \$1 million-\$2 million
- 7 \$2 million or more

APPENDIX A: Undergraduate Survey Data Analysis: Database Queries

Relationships by Affiliation

1. What is the relationship between institutional affiliation [A1 1 through 6] and the description of the department or program [A3 – A8]?
 2. Rank the number of undergraduate religion majors [A61] by institutional affiliation [A1 1 through 6]
 3. Rank the number of undergraduate religion minors [A71] by institutional affiliation [A1 1 through 6]
 4. What courses [B1 a through dd] are the most likely to fulfill general education requirements? [B4a1 – dd1]? Rank all of the courses by percentage, beginning with the highest percentage first.
 5. What is the relationship between institutional affiliation and faculty profiles [cross tabulate A1 with D1-D13]?
 6. What is the relationship between institutional affiliation and course offerings [cross tabulate A1 with B1 to B4]?
 7. What is the relationship between institutional affiliation and undergraduate education [cross tabulate A1 with C1 – C8]?
-

Women in the Profession

8. How many full-time women faculty were at each of five ranks in 1996-1997? [The sum of each category D13 a to D13 e]
 9. How many full time women faculty were at each of five ranks in 1999-2000? [The sum of each category D2a to D2e]
 10. What is the ratio in 1999-2000 of the number of full-time women to full-time men in each of four academic ranks? [D6a to D5a; D6b to D5b; D6c to D5c; D6d to D5d]
-

Adjunct Faculty

11. What is the total number of courses taught by faculty members who were paid at a per-course rate [D7]? [The sum of the numbers]
 12. What is the mean and median number of courses taught by part-time faculty [D7]?
 13. What is the mean and median pay per course for part-time faculty [D8]?
 14. What is the total number of part-time men faculty reported in 1999-2000 [D1 f]? [Sum of the numbers]
 15. What is the total number of part-time women faculty reported in 1999-2000 [D2 f]? [Sum of the numbers]
 16. What is the total number of part-time men faculty reported in 1996-1997 [D12 f]? [Sum of the numbers]
 17. What is the total number of part-time women faculty reported in 1996-1997 [D13 f]? [Sum of the numbers]
-

18. What is the ratio of women adjuncts in 2000 [D2f] to men adjuncts in 2000 [D1f]?
 19. What is the ratio of all adjuncts [D1f plus D2f] to all full time faculty [D1a – e plus D2 a – e] in 2000?
-

Classification of Adjunct Faculty

20. Classify the responses to questions 11 – 19 in terms of the various descriptions of departments or programs [A3 1 through 5.]
 21. Classify the responses to questions 11– 19 in terms of undergraduate course offerings in B1 a through B4 dd (that is, *each* of the responses to all of the items in the left column on page 4 of the Questionnaire.) NB: This query was *not* performed, and, thus, does not appear in the tables.
 22. Classify the number of part-time men faculty in 1999-2000 [D1 f] by the affiliation categories in A1 1 through A1 6.
 23. Classify the number of part-time women faculty in 1999-2000 [D2 f] by the affiliation categories in A1 1 through A1 6.
-

Aggregate Numbers

Number of Majors

24. What is the total number of undergraduate religion majors in 1999-2000 [C7 a]? [The sum of the numbers]
25. What is the total number of undergraduate religion majors in 1996-97 [C7 b]? [The sum of the numbers]
26. Based on a universe of 1131 departments, with 897 responding, can you mathematically estimate the number of religion majors in 1999-2000? And in 1996-97?

Number of Courses

27. What is the total number of undergraduate religion courses offered in 1999-2000 [C1 a]? [The sum of the numbers]
28. What is the total number of undergraduate religion courses offered in 1996-1997 [C1 b]? [The sum of the numbers]
29. Based on a universe of 1131 departments, with 897 responding, can you mathematically estimate the number of religion courses offered in 1999-2000? And in 1996-97?

Department Characteristics

30. What is the total number of responses in each of the responses regarding descriptions that best characterize departments or programs [A3 1 through A3 5]?
31. What is the total number of responses regarding which departments or programs offer an undergraduate major in religion [A6 1]? [The sum of the numbers]

32. What is the total number of responses regarding the number of departments or programs that offer an undergraduate minor in religion [A7 1]? [The sum of the numbers]

Courses

33. What is the total number of responses in each category regarding undergraduate courses offered in 1999-2000 [B2 a through B2 dd]?
34. What is the total number of responses in each category regarding the courses required for a major in a department or program [B3 a 1 through B3 dd 1]? (In each case ignore the number 2 [No] responses)
35. Rank the undergraduate courses offered in 1999-2000 (listed in B1a through dd) according to the number of times each course was checked.

Enrollment

36. What is the total department enrollment in 1999-2000 as indicated by the responses to C2a [the sum of the numbers]?
37. What is the total department enrollment in 1996-1997 as indicated by responses to C2b [the sum of the numbers]?
-

Measures of Central Tendency: Mean and Median Responses

38. What is the mean and median response to the types of undergraduate courses offered [B2 a through B2 dd]?
39. What is the mean and median response to the total department enrollment in 1999-2000 [C2 a]?
40. What is the mean and median response to the total department enrollment in 1996-1997 [C2 b]?
41. What is the mean and median response to the total number of courses that an undergraduate major in religion must complete [C4]?
42. What is the mean and median response to how many undergraduates majored in religion in 1999-2000 [C7 a]?
43. What is the mean and median response to how many undergraduates majored in religion in 1996-1997 [C7 b]?
44. What is the mean and median response regarding the number of undergraduate majors who received a bachelor's degree from an institution in each of four categories [C8 a and C8 b and C8 c and C8 d]?
-

Required Religion Courses

45. What is the total number of institutions that require that students take courses in religion in order to graduate [A4 1]?

APPENDIX B: American Academy of Religion Region Definitions¹

Regions

Eastern International	Mid-Atlantic	Midwest	New England-Maritimes	Pacific Northwest
	Washington			
Ontario	DC	Illinois	New Brunswick	Alberta
Quebec	Delaware	Indiana	Newfoundland	British Columbia
New York	Maryland	Michigan	Nova Scotia	Alaska
Pennsylvania	New Jersey	Missouri	Prince Edward Island	Idaho
	Virginia	Ohio	Connecticut	Montana
	Pennsylvania		Massachusetts	Oregon
	New York		Maine	Washington
	Virginia		New Hampshire	
			Rhode Island	
			Vermont	
Rocky Mountains-Great Plains	Southeast	Southwest	Upper Midwest	Western
Colorado	Alabama	Arkansas	Manitoba	Arizona
Kansas	Florida	Kansas	Saskatchewan	California
Montana	Georgia	Louisiana	Iowa	Hawaii
Nebraska	Kentucky	Missouri	Minnesota	Nevada
New Mexico	Mississippi	Oklahoma	North Dakota	
	North Carolina	Texas	South Dakota	
Utah	Puerto Rico		Wisconsin	
Wyoming	South Carolina			
	Tennessee			
	Virginia			
	West Virginia			

¹ AAR Region definitions were delineated directly from data in the FINDINGS table and elicited a number of duplicate region definitions for the 6 states in color.

APPENDIX C: Carnegie Classification of Institutions of Higher Education²

Definitions of Categories

The 1994 Carnegie Classification includes all colleges and universities in the United States that are degree-granting and accredited by an agency recognized by the U.S. Secretary of Education.

Research Universities I (11): These institutions offer a full range of baccalaureate programs, are committed to graduate education through the doctorate, and give high priority to research. They award 50 or more doctoral degrees¹ each year. In addition, they receive annually \$40 million or more in federal support.²

Research Universities II (12): These institutions offer a full range of baccalaureate programs, are committed to graduate education through the doctorate, and give high priority to research. They award 50 or more doctoral degrees¹ each year. In addition, they receive annually between \$15.5 million and \$40 million in federal support.²

Doctoral Universities I (13): These institutions offer a full range of baccalaureate programs and are committed to graduate education through the doctorate. They award at least 40 doctoral degrees¹ annually in five or more disciplines.³

Doctoral Universities II (14): These institutions offer a full range of baccalaureate programs and are committed to graduate education through the doctorate. They award annually at least ten doctoral degrees-in three or more disciplines-or 20 or more doctoral degrees in one or more disciplines.³

Master's (Comprehensive) Universities and Colleges I (21): These institutions offer a full range of baccalaureate programs and are committed to graduate education through the master's degree. They award 40 or more master's degrees annually in three or more disciplines.³

Master's (Comprehensive) Universities and Colleges II (22): These institutions offer a full range of baccalaureate programs and are committed to graduate education through the master's degree. They award 20 or more master's degrees annually in one or more disciplines.³

Baccalaureate (Liberal Arts) Colleges I (31): These institutions are primarily undergraduate colleges with major emphasis on baccalaureate degree programs. They award 40 percent or more of their baccalaureate degrees in liberal arts fields⁴ and are restrictive in admissions.

² Source: <http://www.aarweb.org/departments/carnegie.asp>

Baccalaureate Colleges II (32): These institutions are primarily undergraduate colleges with major emphasis on baccalaureate degree programs. They award less than 40 percent of their baccalaureate degrees in liberal arts fields⁴ or are less restrictive in admissions.

Associate of Arts Colleges (40): These institutions offer associate of arts certificate or degree programs and, with few exceptions, offer no baccalaureate degrees.⁵

Specialized Institutions

These institutions offer degrees ranging from the bachelor's to the doctorate. At least 50 percent of the degrees awarded by these institutions are in a single discipline. Specialized institutions include:

Theological seminaries, Bible colleges and other institutions offering degrees in religion (51): This category includes institutions at which the primary purpose is to offer religious instruction or train members of the clergy.

Medical schools and medical centers (52): These institutions award most of their professional degrees in medicine. In some instances, their programs include other health professional schools, such as dentistry, pharmacy, or nursing.

Other separate health profession schools (53): Institutions in this category award most of their degrees in such fields as chiropractic, nursing, pharmacy, or podiatry.

Schools of engineering and technology (54): The institutions in this category award at least a bachelor's degree in programs limited almost exclusively to technical fields of study.

Schools of business and management (55): The schools in this category award most of their bachelor's or graduate degrees in business or business-related programs.

Schools of art, music, and design (56): Institutions in this category award most of their bachelor's or graduate degrees in art, music, design, architecture, or some combination of such fields.

Schools of law (57): The schools included in this category award most of their degrees in law. The list includes only institutions that are listed as separate campuses in the 1994 Higher Education Directory.

Teachers colleges (58): Institutions in this category award most of their bachelor's or graduate degrees in education or education-related fields.

Other specialized institutions (59): Institutions in this category include graduate centers, maritime academies, military institutes, and institutions that do not fit any other classification category.

Tribal colleges and universities (60): These colleges are, with few exceptions, tribally controlled and located on reservations. They are all members of the American Indian Higher Education Consortium.

Notes on Definitions

¹Doctoral degrees include Doctor of Education, Doctor of Juridical Science, Doctor of Public Health, and the Ph.D. in any field.

²Total federal obligation figures are available from the National Science Foundation's annual report called Federal Support to Universities, Colleges, and Nonprofit Institutions. The years used in averaging total federal obligations are 1989, 1990, and 1991.

³Distinct disciplines are determined by the U.S. Department of Education's Classification of Instructional Programs 4-digit series.

⁴The liberal arts disciplines include English language and literature, foreign languages, letters, liberal and general studies, life sciences, mathematics, philosophy and religion, physical sciences, psychology, social sciences, the visual and performing arts, area and ethnic studies, and multi- and interdisciplinary studies. The occupational and technical disciplines include agriculture, allied health, architecture, business and management, communications, conservation and natural resources, education, engineering, health sciences, home economics, law and legal studies, library and archival sciences, marketing and distribution, military sciences, protective services, public administration and services, and theology.

⁵This group includes community, junior, and technical colleges.

A Note on Changes in Carnegie Classifications

The Carnegie Endowment revises institution classifications at regular 5-7 year intervals. Carnegie issued an interim update to its 1994 classification in 1997. The 1997 update, affecting classifications for 22 institutions, has been incorporated in the 1998 institution crosswalk distributed with the Doctorate Records File data set.